

22/1-9 Shirley Street, Carlingford, NSW 2118



House For Rent

Saturday, 16 September 2023

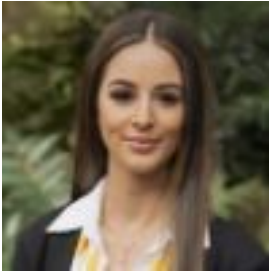
22/1-9 Shirley Street, Carlingford, NSW 2118

Bedrooms: 3

Bathrooms: 2

Parkings: 2

Type: House



Chantelle Coluccio
0298763133

\$780 per week

Conveniently positioned in a quiet street that provides easy access to Epping Metro Station and transport, this property expresses the ultimate comfort and ease! With new timber flooring, fresh paint and newly installed blinds, this property enjoys a fresh living space. With a large combined living and dining space, featuring a split system A/C, this property is best fit for all who appreciate comfortable living! Equipped with three generously sized bedrooms, master with terrace access. Comes with a modern style gas top kitchen, with ample storage space for appliances and breakfast serving bar. Featuring:- Near new floor, paint and blinds- Spacious living and dining space, accompanied by split system A/C- Three generously sized bedrooms, main room with outdoor access- Spacious main bathroom, fully equipped with shower and bathtub- Contemporary kitchen with lots of storage space and gas cook top- 2 security car space- Easy access to Carlingford Road, Epping Metro Station and transport- Carlingford Public School, Cumberland High School