

**22/127 Waterlily Drive, Dudley Park, WA 6210**



**House For Sale**

Friday, 10 May 2024

22/127 Waterlily Drive, Dudley Park, WA 6210

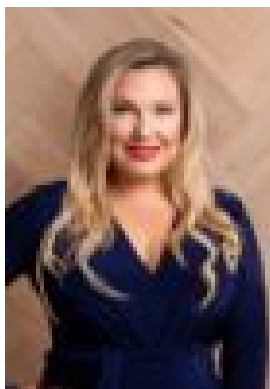
**Bedrooms: 3**

**Bathrooms: 2**

**Parkings: 2**

**Area: 202 m2**

**Type: House**



Sam Bevan

0892030777

## FROM \$899,000

Introducing an unparalleled opportunity to own a slice of paradise with this exquisite 3-bedroom 2-bathroom Hamptons style home, serenely positioned on the waterfront, complete with its own private jetty. This masterpiece of design and craftsmanship blends timeless elegance with modern luxury, offering an idyllic retreat for those who seek the finest in coastal living. Built in 2023, Cachet Homes has created the epitome of style and class. As you step through the white picket gate, onto the entertainment yard, complete with privacy blinds, you are greeted by an atmosphere of sophistication and tranquility. The open-plan living spaces are bathed in natural light, boasting breathtaking views of the water, ensuring a seamless connection with the serene outdoors. The interior showcases meticulous attention to detail, featuring high ceilings, hardwood floors, and a color palette that reflects the coastal setting. The heart of the home is the gourmet kitchen, equipped with state-of-the-art appliances, custom cabinetry, and stone countertops, making it a chef's dream. The adjoining butler's pantry/laundry opens out to the double remote garage via a shopper's entry. Each of the three bedrooms has been thoughtfully designed to offer comfort and luxury, with the master suite providing a tranquil escape, complete with a spa-like ensuite and walk-in wardrobe. The additional bedrooms are generously sized, offering ample space for family and guests. The top floor of the home not only offers a large family room adjacent to the master suite, but is also equipped with a kitchenette, giving the owner two separate spaces for food and drinks preparation. Step outside to discover a beautifully community that leads to your canal-side jetty. The jetty provides direct access to the water, ideal for boating enthusiasts or those who enjoy leisurely days spent fishing or simply soaking up the sun. Located in prestigious Dudley Park, this home is a haven of peace and privacy, yet is conveniently close to the hub of Mandurah, shopping, dining and all the amenities canal-side living has to offer. This home is also deemed suitable for short-term leasing in accordance with the strata by-laws, but we ask investors to please make your own enquiries. The strata company also allows one pet to reside in the home, again, subject to the conditions contained within the strata by-laws. This property is more than just a home; it's a lifestyle choice for those who demand the very best. Do not miss the chance to make this waterfront haven your own. Contact Sam Bevan today for your information pack, and make this home yours today. Strata Levies \$250/qtr