

**22/2-10 Walker Street, Werrington, NSW 2747**



**Sold Townhouse**

Wednesday, 4 October 2023

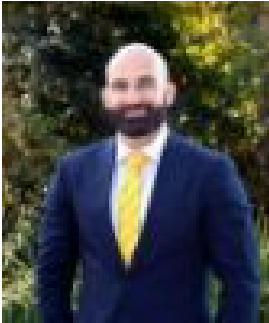
22/2-10 Walker Street, Werrington, NSW 2747

**Bedrooms: 3**

**Bathrooms: 1**

**Parkings: 1**

**Type: Townhouse**



Filip Milutinovic  
0435200345

**\$506,000**

Filip Milutinovic from Ray White is proud to present to the market 22/2-10 Walker St, Werrington. Whether you're a first home buyer looking for a place to call home or a savvy investor, the hunt is over. This property provides exceptional value with a perfect blend of great location and cosy living. It's just a brisk walk from Werrington Station and close to nature parks and the corner shops. This gorgeous townhouse provides 3 spacious bedrooms with built-ins, 1 bathroom plus an extra toilet downstairs, and lockup garage. The property is carpeted throughout with tiled kitchen, laundry and bathroom, and has a generous grass area for kids to play in the backyard. The complex includes some visitor parking out front, ample street parking, tennis courts and common grass area, and swimming pool. FEATURES INCLUDE: • Open-plan living and dining • Three bedrooms with built-ins • Lock up garage • Split system air-conditioning • Internal laundry • Carpet throughout • Bathroom with bath and shower AMENITIES CLOSE BY: • Werrington Station (500m) • Great Western Highway (1km) • The Kingsway Sports field (1.1km) • Werrington Basketball Courts (1.9km) • Troy Adams Archery field (1.8km) • Werrington Station Corner Shops (2.1km) • St Marys Village Shopping Centre (1.9km) • Werrington Public School (3.4km) • St Marys Senior High (2km) • Werrington Lake Reserve (4km) • Western Sydney University & TAFE (3.9km) • Nepean Hospital (5.6km) Fees: • Strata approx \$890 per quarter • Council approx \$420 per quarter • Water approx \$170 per quarter Don't miss out on this opportunity, please call Filip on 0435 200 345 to book your inspection!