

22/300 Jersey Road, Plumpton, NSW 2761

Laing+Simmons

Townhouse For Sale

Wednesday, 24 January 2024

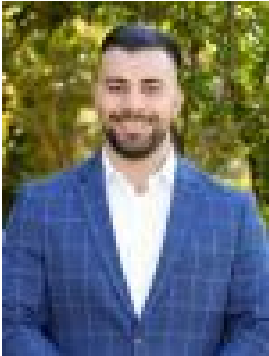
22/300 Jersey Road, Plumpton, NSW 2761

Bedrooms: 3

Bathrooms: 1

Parkings: 1

Type: Townhouse



Ali Awad

0296755566

Price Guide \$500,000 - \$550,000

Beautifully presented and designed to ensure space, style and low-maintenance living, this three-bedroom townhouse creates an ideal first home, family base or investment opportunity. Its streamlined interiors reveal an open-concept design with easy access to a pergola and a child-friendly backyard. The property yields a rental potential of \$550 per week and is located 200 metres from Plumpton Marketplace.- Open lounge/dining with an exposed brick feature wall and highlight windows- Extensive pergola-covered terrace creates a relaxed space to entertain and dine- The child-friendly backyard is well-maintained and captures northern sunshine- Modern kitchen equipped with ample storage and bench space, gas appliances- Three good-sized bedrooms, two bedrooms are fitted with built-in wardrobes- Tidy main bathroom offers a separate bath and shower, laundry with a guest w/c- Townhouse provides a fantastic first home with scope to enhance or add touches- Readymade investment attracts rental potential of approximately \$550 per week- Single carport, garden shed, understair storage, internal laundry with a guest w/c- Exceptional location close to the M4 and M7 motorways, schools and parklands