

**22/45 Pakenham Street, Fremantle, WA 6160**



**Apartment For Sale**

Friday, 17 May 2024

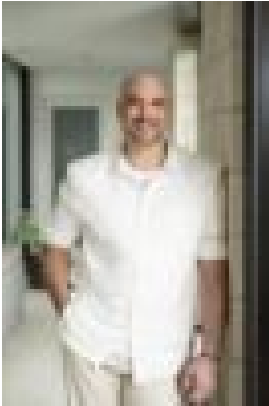
22/45 Pakenham Street, Fremantle, WA 6160

**Bedrooms: 2**

**Bathrooms: 2**

**Parkings: 1**

**Type: Apartment**



Thomas Bale  
0406403888

## New to Market

**THE FEATURES YOU WILL LOVE** Nestled in the vibrant West End of Fremantle, this luxurious sub-penthouse apartment promises the pinnacle of harbourside living and offers a generous floorplan to enjoy. From the marble finishes to the expansive entertaining balcony, every detail has been carefully curated to deliver a sense of luxury and sophistication. You'll find yourself located within the coveted 'Park Lane' building, set a short stroll from The Esplanade as well as Bathers Beach and Market Street. This apartment offers a spacious master bedroom which includes a luxury ensuite with a large walk-in robe that has been thoughtfully designed throughout with bespoke cabinetry. Additionally, there is a second bedroom of generous size, complete with built-in robes. The second bathroom, conveniently located next to the second bedroom, serves a dual purpose as both a guest bathroom and a powder room. This residence is perfectly suited for effortless, low-maintenance lock-and-leave living. Positioned in the heart of Fremantle's lively West End, it offers a central location with Notre Dame University only a stone's throw away. Within a brief 2-minute stroll, you'll find yourself on the bustling Café Strip, while The Esplanade is also conveniently nearby. Be quick to view this apartment – it's a rare find and will be popular!

- Large, elegant apartment in Fremantle's historic West End-
- Two outdoor terraces look over heritage streetscape and The Esplanade-
- Generous open plan living area-
- Bedrooms each with own access to roof top terrace-
- Ducted air conditioning, secure video intercom security, lift access-
- One secure parking space-
- Excellent storage including undercroft storage unit

**THE LIFESTYLE YOU WILL LIVE** Get your weekends back because I have found the perfect property for you! You can move straight into this high-end penthouse apartment in the West End of Fremantle. Surrounded by an array of cafes, restaurants and parkland, and only a 350m stroll from the beautiful Bathers Beach, this apartment is not one to miss!

The laid-back lifestyle of 6160 is simply brilliant.

**THE DETAILS YOU WILL NEED** Council Rates: \$3,222.19 per annum (approx.) Water Rates: \$1,912.55 per annum (approx.) For further details please contact Exclusive Selling Agent Thomas Bale from Mi Casa Property Boutique on 0406 403 888. Disclaimer: Whilst we use our best endeavours to ensure all information is correct, buyers should make their own enquiries and investigations to determine all aspects are true and correct.