

# 22 Asim Drive, Shepparton, Vic 3630

## Sold House

Friday, 25 August 2023

22 Asim Drive, Shepparton, Vic 3630

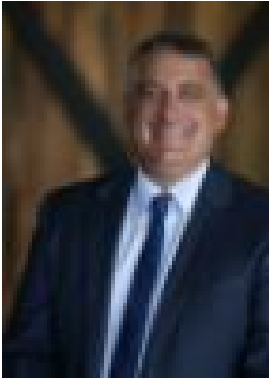
Bedrooms: 3

Bathrooms: 2

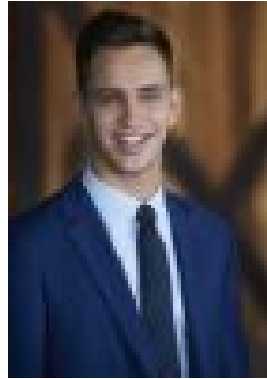
Parkings: 2

Area: 752 m2

Type: House



Rocky Gagliardi  
0358311800



Adam McCurdy  
0358311800

## Contact agent

This beautifully maintained home comprises of 3 well-appointed bedrooms, ensuite and WIR to the master, 2 large living areas, open & stylish kitchen/meals area, room for family and friends to move! Other features include ducted cooling, split systems in the bedrooms. Set on 752m<sup>2</sup>\* block of land and walking distance to the Broken River bush walks and a short drive to the Shepparton CDB, this solid 3-bedroom brick veneer is in a perfect location for a first home buyer or investor to make the best of their opportunity! Outside features an outstanding 9m x 6m\* shed with power, perfect for the work shed or ideal storage for the prized boat or car & established garden