

22 Bradford Court, Enfield, SA 5085



Sold House

Thursday, 9 November 2023

22 Bradford Court, Enfield, SA 5085

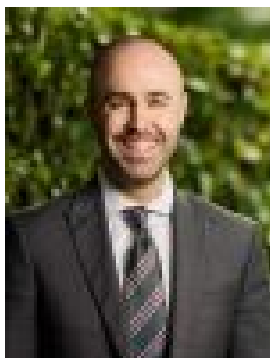
Bedrooms: 3

Bathrooms: 1

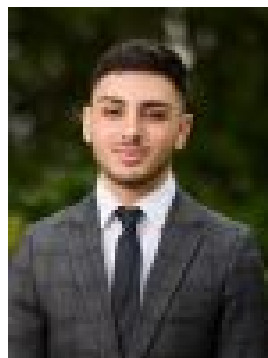
Parkings: 1

Area: 400 m2

Type: House



Nick Borrelli
0861871302



Cristian Aloisi
0431465222

\$690,000

Welcome to your dream home at 22 Bradford Court, Enfield. This immaculate 3-bedroom, 1-bathroom gem is a perfect blend of comfort, style, and convenience. The inviting living area is beautifully carpeted and boasts bi-fold doors that seamlessly lead into the dining room, creating a warm and open living space that's perfect for entertaining. The U-shaped kitchen is a chef's delight, featuring ample storage space, a corner pantry, double sink, and a convenient gas cooktop. The master bedroom is a sanctuary of relaxation, complete with both a built-in robe and a walk-in robe, offering plenty of storage for your clothing and personal items. The bathroom is equipped with a large vanity for storage and a separate toilet for added convenience. Laundry amenities are easily accessible and provide direct access to the backyard, making chores a breeze. Enjoy the paved, sunny courtyard with easy-care gardens, perfect for enjoying the outdoors and entertaining friends and family. Two garden sheds are also included for your storage needs. This property comes with a single garage and additional off-street parking in the driveway for two more cars, ensuring you have plenty of space for all your vehicles. Perfectly located within easy reach of all amenities. Public transport is a short walk to Regency or Hampstead Roads. Shopping at Northpark Shopping Centre, Northgate Plaza & The Churchill Centre is easily accessed, as is the new Walkerville Shopping Centre. The numerous parks and reserves of the area are at your disposal for recreation and exercise, including The Broadview Oval and Tennis Club, Klemzig Reserve and the River Torrens Linear Park. Zoned to Nailsworth Primary and Roma Mitchell Secondary College. Local private schools include Our Lady of the Sacred Heart College, Heritage College, Cedar College, Wilderness School, Prescott College and Blackfriars Priory. Auction Pricing - In a campaign of this nature, our clients have opted to not state a price guide to the public. To assist you, please reach out to receive the latest sales data or attend our next inspection where this will be readily available. During this campaign, we are unable to supply a guide or influence the market in terms of price. Vendors Statement: The vendor's statement may be inspected at our office for 3 consecutive business days immediately preceding the auction; and at the auction for 30 minutes before it starts. RLA 322799 Disclaimer: As much as we aimed to have all details represented within this advertisement be true and correct, it is the buyer/ purchaser's responsibility to complete the correct due diligence while viewing and purchasing the property throughout the active campaign. Property Details: Council | PORT ADELAIDE ENFIELD Zone | GN - General Neighbourhood \\ Land | 400sqm (Approx.) House | 162sqm (Approx.) Built | 1994 Council Rates | \$TBC pa Water | \$TBC pq ESL | \$TBC pa