

**22 Bushby Street, Midvale, WA 6056**



**Residential Land For Sale**

Tuesday, 28 November 2023

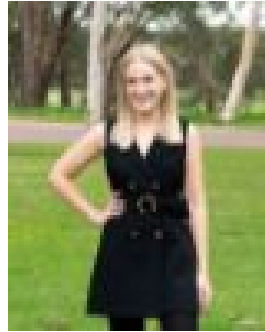
22 Bushby Street, Midvale, WA 6056

Area: 880 m2

Type: Residential Land



Richard Lowenhoff  
0892745555



Laura Savage  
0437384911

**\$299,000**

Located approximately 100m from Great Eastern Hwy you'll find this 880m<sup>2</sup> (approx.) block, zoned R40 with potential to subdivide subject to shire approval. Approximate block dimensions are as follows: 15.29m frontage & 57.33m depth (approx.) LOCATION: \* Midland Gate Shopping Centre - approx. 1.2km\* St John of God Hospital - approx. 1.5km\* Midland Train Station - approx. 2km\* Airport - approx. 7km\* Perth CBD - approx. 19km For more information contact Richard Lowenhoff or Laura Savage from Ray White Midland & Hills.