

**22 Cottinglea Terrace, Ringwood North, Vic 3134**



**Townhouse For Sale**

Thursday, 7 December 2023

22 Cottinglea Terrace, Ringwood North, Vic 3134

**Bedrooms: 3**

**Bathrooms: 2**

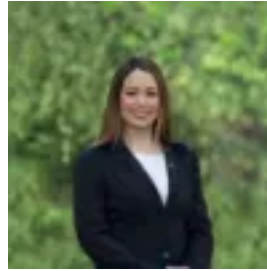
**Parkings: 2**

**Area: 219 m2**

**Type: Townhouse**



William Lyall  
0398706211



Jessica Clarke  
0398706211

**\$870,000 - \$920,000**

Nestled within a private and beautifully presented enclave of quality homes, set amidst impeccably landscaped gardens, this elegant home is in pristine condition, showcasing immaculate interiors awash with abundant natural light. Positioned just a stroll from buses, Mullum Primary School, Norwood Secondary College and leafy Norwood Park, and within walking distance of Ringwood North shopping and Mullum Mullum Creek Trail, the home is also close to Eastland, EastLink and Ringwood Station. Offering peaceful leafy views throughout, the home features an open plan living and dining room, complemented by a separate casual meals area. Adjacent, glass sliding doors flow out to a tranquil courtyard garden, with an expansive timber decking framed by low maintenance leafy borders and two Japanese maples for vibrant seasonal colour. A stylish contemporary kitchen comprises stone benchtops, and quality appliances including an Asko dishwasher, a Bosch stainless steel electric oven, and a Bosch gas cooktop with wok burner. Elevated on the upper level, the large master bedroom includes a walk-in wardrobe plus an airy private ensuite with a stone vanity and frameless glass waterfall shower. Two additional bedrooms are each equipped with built-in wardrobes, and are set alongside a central bathroom with a walk-in frameless glass waterfall shower and a separate W/C. The ground floor also includes a stone guest powder room and a full laundry with direct outdoor access. Featuring plantation shutters, gas ducted heating, evaporative cooling, a security screen front door and good inbuilt storage, the home also includes a remote double lock-up garage plus ample on-site guest parking.