

**22 Deavan Drive, Shorewell Park, Tas 7320**

 Burnie

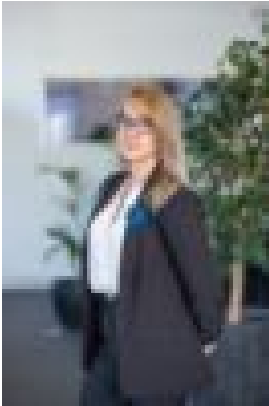
**Residential Land For Sale**

Friday, 29 March 2024

22 Deavan Drive, Shorewell Park, Tas 7320

Area: 375 m2

Type: Residential Land



Julie Sutcliffe  
0439655583

**\$120,000**

Situated on a 375m<sup>2</sup> block, this property presents an excellent opportunity for downsizers or first-time home builders seeking an entry-level property with minimal upkeep. Nestled in one of Shorewell Park's newest subdivisions, it offers a desirable building block for your dream home. Conveniently positioned just a few minutes' drive from Burnie CBD, it is also close to local schools, easily accessible via public transport, and in proximity to all essential amenities.\*Harcourts Burnie has no reason to doubt the accuracy of the information in this document which has been sourced from means which are considered reliable, however we cannot guarantee accuracy. Prospective purchasers are advised to carry out their own investigations. All measurements are approximate.\*