

# 22 Henry Place, Narellan Vale, NSW 2567

## Sold House

Tuesday, 5 December 2023

22 Henry Place, Narellan Vale, NSW 2567

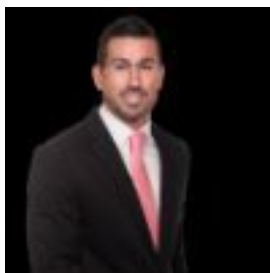
Bedrooms: 4

Bathrooms: 2

Parkings: 2

Area: 463 m2

Type: House



Shannon McDonnell  
0434900224



Thomas Short  
0450875073

**\$970,000**

Welcome to the essence of family living. Your flawlessly presented home is a space where every family member finds their retreat with an open layout that seamlessly connects multiple living areas for easy gatherings and entertaining. Sitting on 463m<sup>2</sup> block, with large undercover alfresco and drive thru garage, your landscaped gardens and roomy backyard provide the perfect setting for relaxation and creating lasting moments with loved ones. Your dream lifestyle starts here in this contemporary haven. INCLUSIONS: Large Master bedroom with generous size ensuite and walk-in robe Built in wardrobes to remaining 3 large bedrooms Well-appointed kitchen Large Undercover alfresco Ducted Air Conditioning Multiple living areas including separate lounge room, dedicated dining, open plan living and dining and further back living room 463SQM block Double garage with drive thru roller door access to backyard Close to local transport, schools, childcares, shopping centres, restaurants and cafés. \*\* We have, in preparing this document, used our best endeavours to ensure that the information contained herein is true and accurate to the best of our knowledge. Prospective purchasers should make their own enquiries to verify the above information.