

**22 Lamb Street, Kilmore, Vic 3764**



**Sold House**

Wednesday, 25 October 2023

22 Lamb Street, Kilmore, Vic 3764

**Bedrooms: 3**

**Bathrooms: 1**

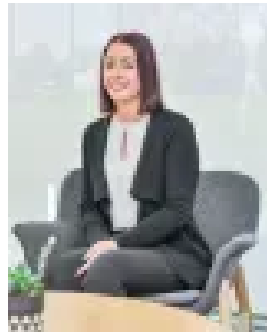
**Parkings: 2**

**Area: 565 m2**

**Type: House**



Kieran Knight  
0357831268



Jade Tomass  
0357831268

**\$450,000**

Backing onto tranquil Crown Land and Kilmore Creek, this pristinely presented single-level villa is designed for those seeking a hassle-free, move-in-ready lifestyle. Upon entry, the floor plan directs you past a spacious main bedroom with a walk-in robe, followed by two additional bedrooms. Progress further, and you're welcomed by a sunlit, north-facing living and dining room that acts as the central hub. This inviting space is openly integrated with a modern kitchen, appointed with a stainless-steel oven, gas cooktop, and dishwasher, making meal preparation a breeze. Double doors from the living zone open onto an expansive elevated deck - perfect for alfresco dining or relaxed weekend barbecues. This outdoor space overlooks a generous garden, providing a secure and open environment for kids' playtime and pets to run around freely. The well-appointed bathroom includes a bath, a separate shower, and a toilet. For added convenience, a second toilet is located near the laundry. The comfort is further enhanced by a split-system air conditioner, floating floorboards, and a drive-through garage, beyond which is space to house a trailer or caravan. Close proximity to Kilmore Primary School, Assumption College, Saint Patrick's Primary Schools, Kilmore East Railway Station, and the Town Centre ensures that essential services are just a short drive away. Retail and recreational options extend to nearby Kilmore Village, Kilmore Golf Club and Racing Club, Centenary Reserve and the Hume Freeway. This is a home that's sure to attract a wide audience, making it an ideal choice for first-time homeowners, downsizers, or investors wanting a valuable addition to their portfolio.