

22 Lloyd Street, New Farm, Qld 4005



Sold House

Wednesday, 25 October 2023

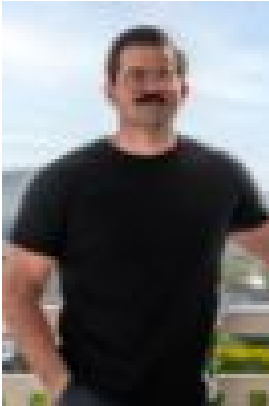
22 Lloyd Street, New Farm, Qld 4005

Bedrooms: 3

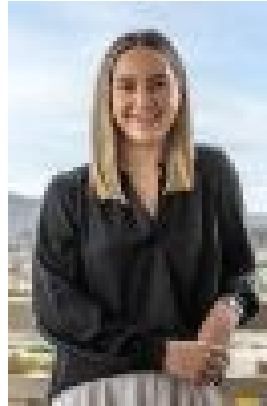
Bathrooms: 2

Parkings: 2

Type: House



Emmanuel Calder
0730638035



Alexandra O'Brien
0730638035

\$1,787,500

Nestled in the highly sought-after New Farm, this exquisite Post-War Cottage is the perfect blend of comfortable indoor living and outdoor charm. Just a stone's throw from James Street, Teneriffe and New Farm Park, this residence offers the unparalleled convenience and laid-back living. Step inside, and you'll be greeted by a spacious living area and well-appointed kitchen, equipped with everything you need for easy living. There's ample counter space for your cooking needs and abundant storage to keep everything in its place. This 3-bedroom, 2-bathroom home offers generous living spaces. The open-plan living and dining areas seamlessly flow to the large outdoor balcony, serving as an extension of your living area - an ideal spot for unwinding or entertaining friends and family. No need to stress about parking - this property offers secure parking for two cars, along with ample storage space. Plus, there's a driveway that accommodates an extra 2 cars, making parking convenient and hassle-free. For those who love to explore, easy access to public transportation, including buses and trains, makes it a breeze to get out and discover all that Brisbane has to offer. New Farm is the kind of suburb where you can enjoy a laid back lifestyle with ease. It's trendy, vibrant, and boasts an array of cafes, restaurants, and the ever-popular New Farm Park. With regular bus services and a CityCat terminal close by, you can easily access all the action. You'll find plenty of shops, cafes, and parks right at your doorstep. Nearby you'll discover James Street and Howard Smith Wharves, where cafes, restaurants, boutiques, and more are waiting to be explored. Embrace the cosmopolitan lifestyle right here in New farm. This home is a perfect opportunity that caters to all. Whether you're looking for your dream home, a savvy investor, a young family in the making, or someone eager to develop a new residence, this property has something for everyone. Don't miss out on this incredible opportunity to own your piece of New Farm!