

# 22 Marija Crescent, Berwick, Vic 3806

## Sold Residential Land

Friday, 1 September 2023

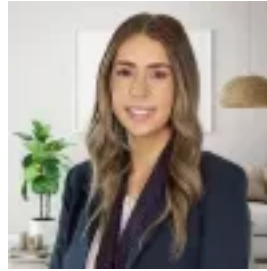
22 Marija Crescent, Berwick, Vic 3806

Area: 682 m2

Type: Residential Land



Hayley Taufa  
0397071400



Jess Hall  
0397071400

**\$760,000**

We are thrilled to present to you a titled block of 682m2 approx ready for you to build your dream home! Get ready to embrace a lifestyle of convenience, comfort, and natural beauty in this remarkable setting. Situated in a highly sought-after area, this vacant block of land is strategically positioned near shops, schools, and wetlands. Nestled within a vibrant community, you'll have easy access to everyday conveniences while being surrounded by nature's splendor. Imagine having a plethora of shopping and dining options right at your doorstep. This vacant block of land is just moments away from an array of retail outlets, supermarkets, cafes, and restaurants. From everyday essentials to leisurely indulgences, everything you need is within reach, making life more enjoyable and effortless. This vacant block of land is ready for you to bring your dream home to life. For more information please call Hayley Taufa 0400 091 398