

22 Nadia Close, Tolga, Qld 4882

House For Sale

Monday, 4 March 2024



22 Nadia Close, Tolga, Qld 4882

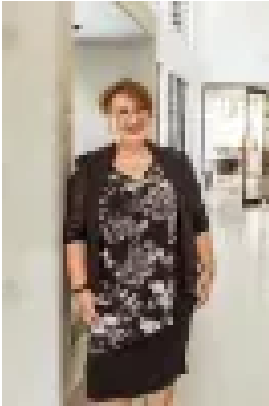
Bedrooms: 4

Bathrooms: 2

Parkings: 6

Area: 4001 m2

Type: House



Lucy Capponi
0438313514

Expression Of Interest | Mid - High \$600,000's

If you are searching for your very own private acreage lifestyle with outlook towards the Emerald range, then this low maintenance home may be the one for you. Positioned on an acre of land at the end of a quiet close, the home boasts an open plan design with multiple living areas and a seamless flow between each. The central kitchen is flooded with natural light, timber cabinetry, corner pantry and ample bench space to prepare home made delights with ease. During the winter months, the beautiful fire place fills the home with heat, making the dining area the place for family and friends to relax and come together. There are four spacious bedrooms, the master bedroom featuring an ensuite and a central bathroom with separate toilet which is positioned adjacent to the laundry ; with convenient external access to the clothes line. Step outside and enjoy the peaceful surrounds with an under cover alfresco dining area with outlook towards the stunning Emerald Range. The low maintenance greenery and succulents will enable to you maintain an acreage lifestyle without the constant means of upkeep ; or add to the existing plants to create the garden of your dreams! Towards the rear of the property is a perfectly located large, powered shed easily able to store up to four vehicles. As well as a garden shed giving you an array of options when it comes to storage. This property really does provide you with the simple option to move in and enjoy or to make your own with cosmetic upgrades and aesthetic additions. Make this house your home today and take advantage of what's on offer. Contact Lucy Capponi on # 0438 313 514 to schedule your private or virtual inspection.