

**22 Old Kent Road, Greenacre, NSW 2190**

**House For Sale**

Saturday, 27 April 2024

22 Old Kent Road, Greenacre, NSW 2190

**Bedrooms: 4**

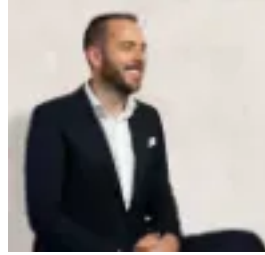
**Bathrooms: 2**

**Parkings: 3**

**Type: House**



Elizabeth Frangieh  
0296424288



Matthew Everingham  
0296424288

## Auction

Nestled in a sprawling treelined neighbourhood pocket, this timeless family residence of solid brick construction exudes original charm with a practical floorplan whilst brimming with potential. The home's family functional layout captures the northern sun whilst illustrating a lifestyle of ease. An impressive address with four bedrooms and bright, spacious interiors across a sensational parcel perfect for those looking to transform and recreate their dream home or next development project (Subject to Council Approval). ESSENTIALS & INCLUSIONS:- Endearing façade with a quintessential porch entrance beyond a spanning 18m frontage of manicured landscapes - Inviting hallway entry leads to bright and seamless living, dining and kitchen - Commodious family kitchen flaunting period timber features with extensive benchtops, quality appliances, and an abundance of storage - Effortless transition to the outdoors where you can relax or entertain under the alfresco, overlooking an easy care yard with a northerly aspect- Four generously sized bedrooms, two complete with built in robes and master with ensuite - Two pristine bathrooms with quality amenities, one with separate bathtub - Single lock up garage with additional driveway parking - Quality inclusions: Internal laundry, ample storage space and more LIFESTYLE & EDUCATION:-Short Stroll to popular eateries, restaurants, Greenacre Shopping Village, Mount Lewis Shops and Bankstown Centro-Moments to Bettina Court Reserve, Parry Park, Roberts Park and Greenacre Splash Park-Local schools such as St Charbel's School Catholic School, Banksia Road Public School, Greenacre Public School, Malek Fahd Islamic School, St Johns Primary School, Chullora Public School and Al Noori Muslim School -Close to Punchbowl Train Station and public transport linksDISCLAIMER: While Richard Matthews Real Estate have taken all care in preparing this information and used their best endeavours to ensure that the information contained therein is true and accurate, but accept no responsibility and disclaim all liability in respect of any errors, inaccuracies or misstatements contained herein. Richard Matthews Real Estate urge prospective purchasers to make their own inquiries to verify the information contained herein.