

22 Pastoral Street, Pitt Town, NSW 2756



Sold House

Monday, 14 August 2023

22 Pastoral Street, Pitt Town, NSW 2756

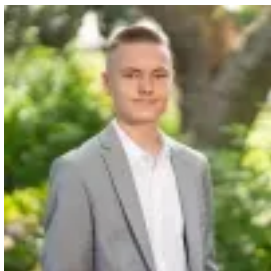
Bedrooms: 4

Bathrooms: 2

Parkings: 2

Area: 551 m2

Type: House



Ben Roberts

0288672000

\$1,510,000

This fantastic single level home offers drive through access and is the ultimate family home. Positioned in the highly sought after Vermont Estate, it's just a short walk to Pitt Town Public School, local shops, cafes and moments to local reserves.- 4 bedroom home on a level 551sqm block- Drive through access offering additional storage space- Diverse floorplan with multiple living zones - Home office space or the opportunity of a 5th bedroom- Stone benchtops, gas cooktop with stainless steel appliances- Plantation shutters, ducted air conditioning, ceilings fans and solar panels- Ample storage, internal entry to garage, driveway parking- Fantastic alfresco area with gas connection and ceiling fans - Stunning in ground pool with side yard and dedicated BBQ area- Close to café's, IGA, Pitt Town boat ramp, Lynwood Country Club and Windsor Riverview Shopping Centre