

22 Stuart Street, Noble Park, Vic 3174



House For Sale

Saturday, 23 December 2023

22 Stuart Street, Noble Park, Vic 3174

Bedrooms: 3

Bathrooms: 1

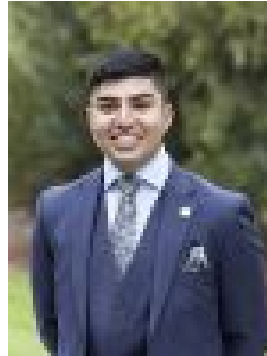
Parkings: 2

Area: 801 m2

Type: House



Chris Utley
0395470000



Talha Mamsa
0432598151

Online Auction tomorrow at 5pm!

Online Auction Thursday 25th January @ 5pm. For bidding registration and link to view the auction contact Chris Utley on 0421 825 338. This distinctive and centrally located site comes complete with plans and permits for six high-quality townhouses, marking one of the final opportunities in this coveted vicinity of central Noble Park. Boasting a mere 250m distance to Douglas Street Shopping precinct and Noble Park train, this rare gem promises unparalleled convenience. The rectangular allotment spans 801m² (approx) and features an existing classic family home on the property with neat street appeal. In excellent condition, the home boasts generously proportioned rooms, 3 good sized bedrooms with wardrobes, central family bathroom and a sizeable family kitchen. Abundant off-street parking is available, complemented by a lock up garage and luscious front & rear gardens. Each of the six units are meticulously designed to provide spacious living, offering premium central living in an exclusive enclave. Among the townhouses, four feature triple storey layouts with 2 good sized bedrooms with ensuites, powder rooms, open plan kitchen & living areas and lock up garages. The remaining two townhouses are set over 2 storeys and feature 2 bedrooms with ensuites, premium downstairs kitchen & living areas as well as off street parking and powder rooms. Plans available upon request! For astute investors, developers, or land bankers considering leasing the home before commencing development, the current rent stands at \$370 per week approx. Seize the opportunity to capitalise on this prime, central location in the heart of Noble Park, a short stroll to Noble Park train station, shops and village. Surrounded by excellent primary and secondary schools, with easy access to Eastlink and the Monash Freeway, everything you need is just minutes from your front door.