

22 Treeland Circuit, Kellyville, NSW 2155

MANOR

House For Sale

Friday, 2 February 2024

22 Treeland Circuit, Kellyville, NSW 2155

Bedrooms: 4

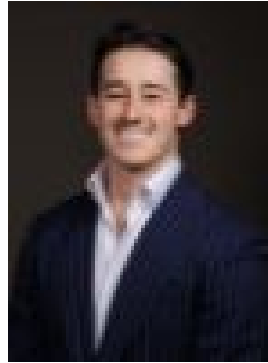
Bathrooms: 2

Parkings: 2

Type: House



Kevin Buchanan
0296395833



Zac Fitzhenry
0296395833

Contact Agent

Enviably located in a quiet, family-friendly street opposite parkland views, this modern family home is one to tick all the boxes! Spaciously sprawled across two levels the home boasts plenty of living and dining areas both indoors and out, as well as four spacious bedrooms of accommodation and a manicured backyard for entertaining. This sought-after location positions you within close proximity to Kellyville Metro Station, Kellyville Shops, City buses, quality local schools, parks and sports grounds, childcare centres and easy access to main arterial roads. Additional features include: * Formal living area * Spacious combined family and dining area off the kitchen * Open plan style kitchen with island benchtop and breakfast bar seating, large walk-in pantry and stainless-steel appliances including gas cooking * Internal laundry room * Guest powder room on ground level * Upstairs rumpus room * Master bedroom with private balcony overlooking bushland, walk-in robe and modern ensuite * Three additional bedrooms of accommodation all with built-in robes * Large family bathroom with separate bath and shower * Ducted air-conditioning * Timber flooring throughout * Plantation shutters * Covered deck entertaining area * Alfresco area * Low maintenance grassed backyard * Double car lock-up garage with internal access * Under stair storage