

**2205/486 Pacific Highway, St Leonards, NSW 2065**



**Apartment For Rent**

Thursday, 25 April 2024

2205/486 Pacific Highway, St Leonards, NSW 2065

**Bedrooms: 2**

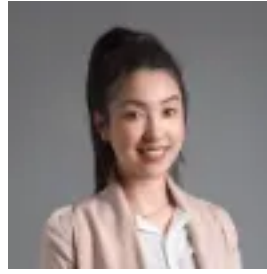
**Bathrooms: 2**

**Parkings: 1**

**Type: Apartment**



Jeffrey Li  
0298848228



Faye Dai  
0298848228

**\$1,400 pw**

With sweeping city views that claim the Harbour Bridge as its centrepiece, this apartment promises a lifestyle of sophistication in the resort-style 'St Leonards Square' building. Pure indulgence offers floor-to-ceiling windows, a versatile floor plan, and sweeping views of Sydney Harbour and its surroundings. Enjoy outstanding convenience, being located only approx. 300m from St Leonards train station and moments to some of Sydney's best healthcare, schools, shopping, and dining destinations. Connectivity will soon be even greater with the new Crows Nest Metro station approximately 150m away to provide faster and more frequent trips to the CBD. Home Features:- Floor-to-ceiling glass windows with dazzling day/night views- Two storage cages, one in the car park basement and another one conveniently located on level 19 residential level - Modern island kitchen with stone benchtop and built-in Miele appliances- Extra large-sized master bedroom, complete with built-ins (Master with ensuite)- Luxurious bathroom equipped with feature tiled wall- Ducted air-conditioning, video intercom, and NBN connectivity- Residential lifestyle facilities including heated swimming pool, sauna, spa, gym, game room, music studio, business meeting suites, outdoor terrace, and more- Each tower has its own dedicated 24-hour concierge service- Minutes walk to St Leonards Plaza (1min), train station(4min), and Metro station (6mins) There are 29 visitor spaces, 14 car-share spaces, and 18 electronic car charging bays. Resident-only private amenities on Level 2 include a Music Studio, Cinema room, Function & Games Room, Meeting Rooms, Dining Room & Kitchen & and an outdoor landscaped area. Exclusive resident recreation facilities are located on Level 14 with impressive Sydney Harbour views, including a spa, lap pool, steam room change rooms, yoga studio, gymnasium, and a lounge/entertaining terrace with a BBQ area.