

**222 Brougham Place, North Adelaide, SA 5006**

GIORDANO  
& PARTNERS

**Sold House**

Thursday, 17 August 2023

222 Brougham Place, North Adelaide, SA 5006

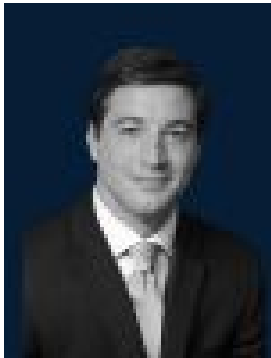
**Bedrooms: 5**

**Bathrooms: 3**

**Parkings: 2**

**Area: 779 m2**

**Type: House**



Grant Giordano  
0475770035



Jacqui Ilicic  
0400144897

**\$4,950,000**

Prestigiously positioned in one of North Adelaide's most ultra-premium streets is this truly magnificent 1872 Bluestone Symmetrical Villa offering elevated tree-top views of Adelaide's dynamic city skyline and a cosmopolitan lifestyle often sought and seldom found. Beyond a cast-iron gate and meticulously manicured gardens, one enters this grand abode via an expansive verandah and leadlight door, blossoming into a grand welcoming hall outfitted with a feature chandelier, soaring ceilings and rich parquet floor boards radiating warmth and class. Character architectural features flow throughout the incredibly well-illuminated home awash in natural light, enhanced by large windows in the generous sitting room and adjacent dining room, offering views over an immense tessellated terrace of the highlands and CBD. Furthermore, the kitchen is outfitted with European appliances and copious amounts of storage. Comprising 5 bedrooms, 3 bathrooms, 3 studies and 2 car spaces, the nearly 600 sqm home is private, spacious and simply breath-taking. Other desirable Features Include: - Master ensuite with WIR - Dishwasher - Large separate laundry - Second kitchen downstairs - Studio - Ducted heating and cooling - Additional storage - Garage with automatic roller door - Separate Study or Bedroom 6 - Home office/media room - Cellar - Library with shelving The home is also mere moments to the boutique shopping and epicurean delights of Melbourne Street, O'Connell Street and the CBD, and is in walking distance to popular Adelaide Oval and the River Torrens. In addition, this stunning home is within close proximity to Gilles Street Primary School and is zoned for North Adelaide Primary School, Adelaide High and Adelaide Botanic High Schools. Ideally located on a wide tree-lined avenue in this exclusive enclave of some of Adelaide's most prestigious and coveted suburbs only minutes from the CBD, 222 Brougham Place is ideal for the discerning Executive seeking lifestyle without compromise.