

222 Paterson Road, Bolwarra Heights, NSW 2320



House For Sale

Friday, 19 January 2024

222 Paterson Road, Bolwarra Heights, NSW 2320

Bedrooms: 3

Bathrooms: 1

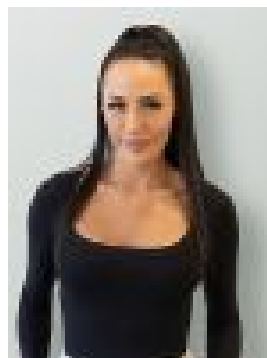
Parkings: 3

Area: 796 m2

Type: House



Matthew McBrearty



Celeste Rodwell
0400175419

Contact Agent

A dreamy combination of space, convenience and classic family comfort ensures a carefree style of living in this much-loved single-level home. Headlined by multiple social areas including a combined lounge/dining area with working gas fireplace plus a huge Queensland room with gas fire, its well-planned family layout oozes practicality with bedrooms peacefully located on separate wings. A long list of features such as a stylish kitchen and bathroom, ducted air-conditioning, and a big backyard keep the highlights coming, plus there is a dedicated caravan pad/carport linking to a secure garage. Known for its great lifestyle rewards, Bolwarra Heights is surrounded by the quaint villages of Lorn, Largs, and Morpeth while being an effortless 8 minute drive from Maitland's heritage heart. -?Solid brick-built home with parking for cars and campers, two garden sheds at rear -?Inviting kitchen featuring a gas cooktop, good prep space and plenty of storage -?Fabulous QLD-style room where you'll live life, its huge and overlooks the yard -?Open plan living/dining featuring a real flame gas fire with sandstone surround -?Three bedrooms share a bright and airy bathroom with separate bath and shower -?Built-in robes, ceiling fans, internal laundry room, lovely mix of timber and tiled floors -?Generous yard catching northerly sun, ideal for the green thumb or vegie patches -?Shop or dine in Maitland and its Levee Precinct, or at one of the local village pubs -?9.5km to Stockland Green Hills and Maitland Hospital, zoned for quality schools