

224/221 Sydney Park Road, Erskineville, NSW 2043

Raine & Horne
Newtown Group

Sold Apartment

Friday, 24 May 2024

224/221 Sydney Park Road, Erskineville, NSW 2043

Bedrooms: 1

Bathrooms: 1

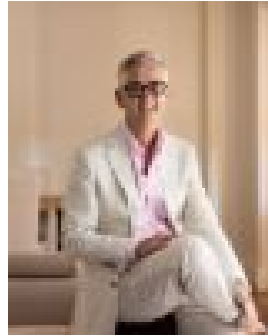
Parkings: 1

Area: 82 m2

Type: Apartment



Duncan Gordon
0285963555



Michael Harris
0285963555

\$860,000

Enjoying a prized setting in the tightly held Zenix complex surrounded by lush tropical gardens, this split-level designer apartment delivers resort-style living at its finest with convenient rear access via Coulson Street. Beautifully presented for contemporary comfort and ease of living, it reveals stylishly appointed interiors dressed in fresh neutral decor and flooded with natural light. There is a streamlined stone kitchen with Smeg gas appliances, while generous living/dining areas extend to a sun washed courtyard within metres of the complex swimming pool. Promising ultra-convenience, it is placed 800m walk to Erskineville Station, village shops and cafes, while 250m to King Street and directly opposite Sydney Park.

- Beautifully presented and appointed for stylish contemporary living
- Split-level layout, spacious living/dining flows to sunlit courtyard
- Streamlined stone kitchen, Smeg gas appliances, Bosch dishwasher
- Bedroom with built-in robe opens to balcony overlooking gardens
- Fully tiled bathroom with combined bath/shower, internal laundry
- Split-cycle air conditioning, engineered timber floors lower level
- Study nook, carpeted bedroom/upper level, security intercom access
- Resort-style facilities, tropical gardens, pool, tennis court, gym
- Convenient rear access via Coulson Street to exclusive use car space
- 280m to St Peters Station, 800m to Erko Station, shops, bars and cafes