

226 Payne Road, Beaconsfield, Vic 3807



Sold Acreage

Friday, 8 September 2023

226 Payne Road, Beaconsfield, Vic 3807

Bedrooms: 6

Bathrooms: 5

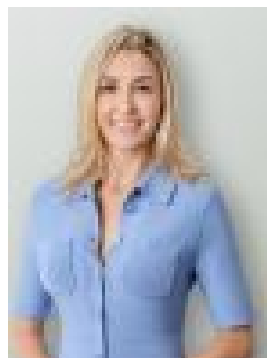
Parkings: 13

Area: 5 m2

Type: Acreage



Anne Haynes



Gabrielle Haynes
0419043703

\$4,475,000

Step into a world of exceptional living, where elegance meets grandeur on a sprawling 5.3-hectare estate. This architecturally designed masterpiece boasts 6 bedrooms, 5 bathrooms, and sweeping panoramic views toward the Mornington Peninsula and Upper Beaconsfield, that stretch as far as the eye can see. This is the ideal floor plan where family can come together, and also have the flexibility of spending time in their own private sanctuary. Bespoke fixtures adorn every corner, crafting ambiance that's truly exceptional. The current owners have meticulously renovated and extended the home, infusing modern elegance while preserving its timeless charm. Entering the home, you are greeted with 6-metre high ceilings, classic solid stone walls, exposed roof beams and floor to ceiling northerly windows. The sun-drenched principal bedroom & parents' retreat is a sanctuary of serenity, featuring underfloor hydronic heating in the ensuite and a private wrap-around balcony. The front living room, with its open fireplace transforms into a haven for music and relaxation. Every room is a masterpiece, thoughtfully designed for work and leisure. The elegant study and separate study nook provide spaces for productivity and contemplation. In the kitchen, discover a culinary haven with sleek Cesar stone benchtops, double dishwashers, induction cooktop and oversized scullery with separate sink. The bar area, complete with wine fridges, adjoins a billiard room and adds an indulgent touch. Bi-fold doors erase the lines between indoors and outdoors, creating an ideal setting for unforgettable gatherings. An alfresco entertainment area, boasting a fully equipped kitchen, built-in BBQs, and convenient poolside showers and powder room, is a paradise for entertainers. Some of the many features of this home include hydronic heating with wood and/or gas furnace, multiple split system air conditioners, luxury laundry and a mud room that has ample storage including a walk-in pantry. Refresh in the infinity heated pool, unwind in the spa, or gather around the fire pit while savouring the panoramic views. This is family living at its finest where teenagers will want to spend most of their time at home with friends creating lifelong memories. This floorplan is perfect for teenagers wanting their own space. They can embrace their sporty side with their own private futsal, tennis and basketball courts or be a spectator from the courtside cabana. The estate also exhibits a double lock up garage, large machinery shed with ample space for vehicles, a triple carport with high clearance, 3 x 30,000L water tanks, a dam, post and rail fenced paddocks and a large section of flat land (approx.. 2,000sqm) perfect for truck storage or an equestrian arena. A 10KW Solar System adds an eco-savvy touch. The self-contained function room is a gem of versatility. Whether it's birthday parties, weddings, or hiring out for special occasions, this space adapts effortlessly to your event needs. This estate offers a multitude of living zones, both indoors and out, ideal for relaxation and entertaining, making it perfect for large families. This is your opportunity to make this remarkable estate your own.