

2273-2287 Elizabeth Drive, Luddenham, NSW 2745



Residential Land For Sale

Wednesday, 12 June 2024

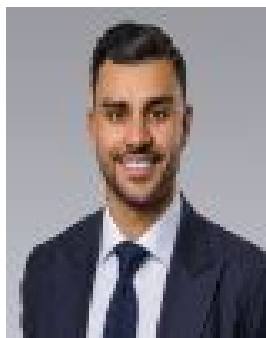
2273-2287 Elizabeth Drive, Luddenham, NSW 2745

Area: 10 m2

Type: Residential Land



Thomas Mosca
0423086593



Nick Estephen

Auction 11th Jul 2024 'Dexus Place' Cooley CBD

Colliers are excited to present 2273-2287 Elizabeth Drive, Luddenham to the market for sale. The property is 10.22-hectare* parcel situated in the 'Northern Gateway' precinct within the Western Sydney Aerotropolis with all planning finalised and Sydney Water servicing infrastructure underway. This is a strategic block of land in a high exposure location, and adjoining development sites in planning. The Precinct Plan gives the opportunity to develop Enterprise, Light Industrial, and Neighbourhood Centre + many other uses in the Land Use Table. The key property highlights are as follows:- Enormous land size of 10.22 hectares* (25.25 acres*) in high exposure location- Enterprise zoning which allows for strategic Light Industry, Enterprise, and Commercial Development- Precinct Plan shows a Neighbourhood Centre being located on part of the site- Expansive 24-metre Height Limit under the new Aerotropolis Planning Framework - Sydney Water currently working on infrastructure along Elizabeth Drive. 2273-2287 Elizabeth Drive, Luddenham will be sold by way of Public Auction on 11th July 2024. The auction will be held 'Dexus Place' Cooley CBD - 1 Margaret Street, Sydney NSW 2000. The auction portfolio will commence at 10:30am. For more information, call your Dedicated Aerotropolis Experts, Thomas Mosca (0423 086 593), Nick Estephen (0488 748 186). *Approx.