

229 Bonniebrook Road, Bonnie Brook, Vic 3335

House For Rent

Friday, 19 April 2024



THE ELEET

RESIDENTIAL • DEVELOPMENTS • LAND • PROJECTS
CAROLINE SPRINGS

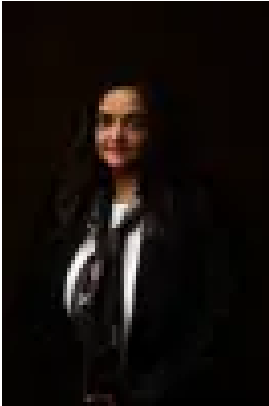
229 Bonniebrook Road, Bonnie Brook, Vic 3335

Bedrooms: 4

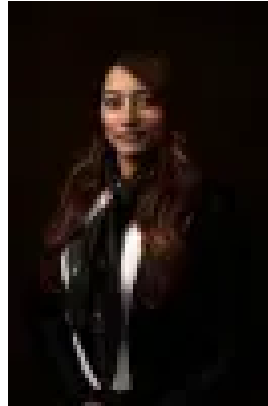
Bathrooms: 2

Parkings: 2

Type: House



Dee Sengupta
0385487100



Sweety Saran
0385487100

\$520 per week

THE ELEET Caroline Springs proudly introducing a pristine single-story gem, perfect for those seeking style and convenience. This newly constructed home features four well-appointed bedrooms, two modern bathrooms, and a spacious two-car garage. Step into comfort with a decent-sized entrance that welcomes you to a seamlessly designed layout, boasting multiple living areas that cater to relaxation and entertainment alike. The residence shines with large windows, inviting natural light to sweep across every corner, enhancing the home's fresh and airy vibe, study nook with inbuilt desk for your convenience. The heart of the home is the stylish kitchen, equipped with top-of-the-line appliances including a gas stove, oven, dishwasher, and microwave. Ample storage is a chef's dream, fulfilled by sufficient drawers and a walk-in pantry. This kitchen doesn't just cater to functionality but also encourages family time, as it opens to a living area, making meal prep and family time synonymous. Wooden flooring throughout the home adds a touch of elegance and easy maintenance. Comfort is key with evaporative cooling and ducted heating systems installed, ensuring your home is a sanctuary in every season. The allure extends with plush carpeting in all bedrooms, offering a cosy retreat. Outside, the decent-sized backyard provides a private space for relaxation or a playground for kids. Landscaping of front yard and backyard to be completed soon. Located in a prime area, this home keeps daily conveniences within reach. Just a 6-minute drive from Coles, 8 minutes from IGA, and close proximity to childcare options and day cares about 5-6 minutes away. Health and well-being are also catered to with Palmers Medical Centre just a 10-minute drive from the door. This home isn't just a place to live, it's a lifestyle waiting to be enjoyed. Ideal for families looking for a blend of comfort and convenience, or anyone who appreciates thoughtful design paired with functionality. Don't miss out on making this your new address – your dream home awaits! Don't miss the opportunity to make this extraordinary property your home. Take action now and secure this fantastic property before it's too late! Visit one of our open houses or contact Dee on 0404 827 000 for more information. PHOTO ID IS A MUST AT ALL OPEN FOR INSPECTIONS. DISCLAIMER: All stated dimensions are approximate only. Particulars given are for general information only and do not constitute any representation on the part of the rental provider or agent. Please see the below link for an up-to-date copy of the Due Diligence Checklist: <http://www.consumer.vic.gov.au/duediligencechecklist>