

23/1 Sydney Avenue, Barton, ACT 2600



Sold Unit

Saturday, 25 November 2023

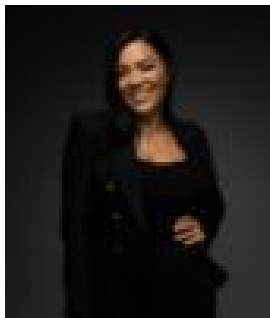
23/1 Sydney Avenue, Barton, ACT 2600

Bedrooms: 1

Bathrooms: 1

Parkings: 1

Type: Unit



Eva Bono

0415668718

\$585,000

What you see: A spacious apartment with quality inclusions and sunset views from the oversized balcony. With one of Canberra's most desirable precincts at your doorstep, Realm Park offers an unmatched lifestyle in the heart of the Inner South. What we see: Your day starting with a freshly brewed coffee at Maple & Clove and ending with a woodfired pizza and tapas at Ostani Bar. See more: Stunning 1 bedroom apartment in sought after Realm Park Sunset views over Manuka Oval and Parliament House Generous sized open plan living Oversized balcony Modern kitchen with stone benchtops & mirrored splash back Miele Cooktop, Oven & Integrated Microwave Fisher & Paykel Dishwasher Drawer Spacious North facing main bedroom with built in robes Bathroom with floor to ceiling tiles, shower & mirrored shaving cabinet European laundry Linen cupboard Double roller blinds Stacker sliding doors from living to balcony Square set ceilings Ducted heating and cooling throughout Allocated car space and storage cage in secure basement Additional oversized storage cage Walking distance to a number of Government Departments & Agencies Short walk to Kingston, Manuka and Lake Burley Griffin 5 minute drive to Parliament House 5 minute drive to Kingston Foreshore 5 minute drive to Manuka Shopping Precinct 9 minutes drive to Canberra Centre 11 minutes drive to Woden Town Centre Living: 64m² Balcony: 12m² Total: 76m² EER: 6.0 Built: 2011 Strata: \$1,521 per quarter Rates: \$1,897 per annum Land Tax: \$2,324 per annum (only applicable if rented) Rental Appraisal: \$530 - \$580 p.w Disclaimer: The material and information contained within this marketing is for general information purposes only. HIVE Property does not accept responsibility and disclaim all liabilities regarding any errors or inaccuracies contained herein. You should not rely upon this material as a basis for making any formal decisions. We recommend all interested parties to make further enquiries.