

23 Avaward st, Wyndham Vale, Vic 3024

House For Rent

Saturday, 11 May 2024

23 Avaward st, Wyndham Vale, Vic 3024

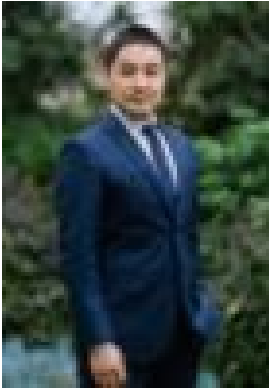
Bedrooms: 4

Bathrooms: 2

Parkings: 2

Area: 350 m2

Type: House



Leslie Yin

\$470 per week

23 AVAWARD STREET, WYNDHAM VALE Situated in the popular Jubilee estate, Residents are already enjoying parks, playgrounds and wetlands right on their doorstep and gym within walking distance. Only a short drive from freeway access and all amenities in the townships of Wyndham Vale and Werribee and Pacific Werribee Shopping Centre. This 4-bedroom spacious family house is positioned close to schools, shops, sporting facilities, public transportation and only minutes away from Manor Lakes Shopping Centre, Wyndham Vale Train Station served by the V/Line Geelong and Warrnambool services to and from Melbourne CBD with less than 30 minutes' travel by train. This well-presented home boasts:- Master bedroom with ensuite and walk-in robe- Open plan living zone- Kitchen overlooking backyard, complete with a full set of stainless steel appliances- Ducted heating- Other three spacious bedrooms- Split system air conditioning- Covered rear entertaining area- Double remote garage This family home offers everything with easy access to the area's best lifestyle attractions like Werribee Open Range Zoo, Werribee Mansion, the You Yangs and the Surf Coast. Inspection is sure to impress. Please call 0478 265 741 today to arrange an inspection.