

23 Beaton Avenue, Raymond Terrace, NSW 2324



Sold House

Monday, 14 August 2023

23 Beaton Avenue, Raymond Terrace, NSW 2324

Bedrooms: 5

Bathrooms: 3

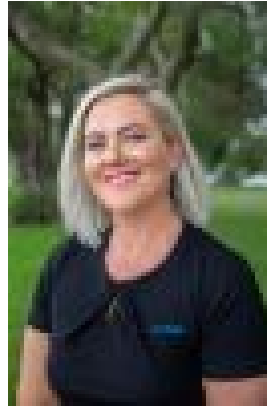
Parkings: 4

Area: 2594 m2

Type: House



Jessica Snow
0422016607



Lauren Hair
0249834200

\$951,000

A CUT ABOVE THE REST! Perched atop the crest of the hill set on a private 2,594m² lot, this remarkable five bedroom family abode offers magnificent rural views. Located in the sought-after estate of Riverview Ridge, this expansive home will cater to any family composition. Opportunities don't come knocking like this often so seize the moment. You need to inspect this property to appreciate all it has to offer. Feature-packed with: - Five bedrooms in total all of which are generously proportioned- The Master bedroom boasts an enormous walk-in robe and spacious en-suite complete with double basins- Of the remaining four bedrooms, three offer built-in robes- Ducted heating and cooling throughout providing comfort all year round- Expansive open plan living, kitchen and dining. The kitchen being an entertainers delight offering a walk in pantry and vast island servery that is free flowing onto the dining and living areas- Generous sized rumpus room providing another option for families to spend quality time together - Spacious main bathroom offering a bath and separate toilet- Screened alfresco with beautiful bi fold doors opening up off the main living area lending itself to indoor/outdoor living. Enjoy relaxing or entertaining while taking in the views- Double carport attached to the house making parking a breeze could also double for a covered storage area for the boat or caravan- Oversized detached double garage with automated door, designed with convenience and space in mind offering air conditioning, bathroom facilities and is fully powered with an abundance of power points located throughout.- Workshop attached to the double garage. Turn into a teenager retreat, guest house or you could also run a business - the possibilities are endless- Large secure fenced yard at the rear of property adding a place for children or pets to run free while ensuring peace of mind.- Well manicured lawns and well established gardens adding to the picturesque surrounds With its idyllic location, expansive features, and close proximity to amenities, this one of a kind family home offers an extraordinary opportunity to experience abundant living at its finest. Don't miss your chance to embrace this remarkable lifestyle. Council and Water Rates approximately \$2726 per annum Rental Appraisal \$620.00 - \$650.00 per week This information has been provided to us by third parties and we do not accept responsibility for its accuracy. You should make your own enquiries and check the information so as to determine whether or not this information is in fact accurate. You must make your own assessment and obtain professional advice is necessary.