

23 Bradshaw Crescent, Katherine, NT 0850



Sold House

Monday, 14 August 2023

23 Bradshaw Crescent, Katherine, NT 0850

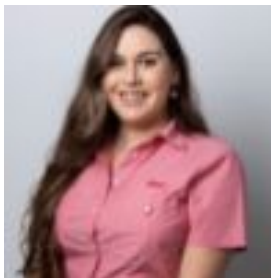
Bedrooms: 4

Bathrooms: 2

Parkings: 4

Area: 480 m2

Type: House



Ashleigh Chadwick

0438857912

\$550,000

This flawless home has been incredibly well maintained and is practically BRAND NEW! This would be ideal for anyone with large families or simply wanting a luxury feeling home. Property features include:- 4 good size bedrooms with built-ins and split system air conditioning- Spacious air-conditioned Master bedroom has walk in Robe and nice ensuite- Open plan kitchen with dishwasher- Ceiling fans and Security screens throughout- 2 spacious living areas- Internal Laundry- Air-conditioned living areas- Entertainment area with built in BBQ and Pizza Oven- Spa- Holman phone operated reticulation system- Nicely manicured lawns surrounding the house- Side access parking spaces to accommodate a caravan / boat- Excellent area, located approx 5 minutes from the Katherine CBD and walking distance to schools and shops- Very genuine sale, motivated owners are eagerly awaiting all inspections & interest- Leased until the 27th of Feb 2023 with a rental return of \$750 per week Phone Residential Sales Specialist Ashleigh Chadwick today on 0438 857 912 for more information or to arrange an immediate inspection.