

23 Grandview Drive, Panorama, SA 5041

HARRIS

House For Sale

Tuesday, 9 January 2024

23 Grandview Drive, Panorama, SA 5041

Bedrooms: 3

Bathrooms: 1

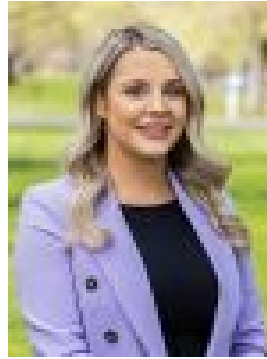
Parkings: 1

Area: 786 m2

Type: House



Jarred Stamoulis
0430160663



Naomi Perrett
0488540920

\$680k

Tucked away in the peaceful Panorama neighbourhood, this 3 bedroom beauty offers the perfect blend of comfort and convenience. Step inside and discover a sun-soaked living area where large windows frame potential stunning views from the hills to the city and to the sea, drawing natural light into every corner and creating a warm, inviting space. Beautiful polished timber floors add a touch of sophistication and elegance, weaving warmth throughout the home. An updated kitchen awaits, boasting modern appliances and ample bench space, making mealtimes a breeze. Whether whipping up a quick breakfast or hosting a family gathering, you'll have everything you need at your fingertips. Three comfortable bedrooms offer peaceful retreats, providing ample space for families or those who enjoy having guests. Outside, a blank canvas backyard awaits your creative touch. Imagine a lush garden bursting with colourful blooms, a sparkling pool for summer days, or an entertaining area perfect for barbecues with friends (all STCC). The possibilities are endless! And let's not forget the perks of living in Panorama. Enjoy a peaceful and friendly community, ideal for raising a family or simply enjoying a relaxed lifestyle. Marion Shopping Centre and Pasadena Green Shopping Centre are just a short drive away, making errands easy. Top-rated schools like Clapham Primary School, Scotch College, and Mercedes College are all within reach as well as Flinders University. Plus, you'll find parks and green spaces galore throughout the neighbourhood, perfect for getting your fill of fresh air and outdoor activities. 23 Grandview Drive is much more than just a house; it's a chance to own a piece of paradise. Don't miss out on this incredible opportunity! Contact Jarred and Naomi today to arrange an inspection and see this amazing home for yourself. More things to love: - Single Carport - 786sqm of land (approx.) - Potential to build or extend in the future for views to the Hills, City and Sea (SCC) - Polished timber floors throughout - NBN ready - Great for families, first home buyers and investors alike - Fantastic schooling in the area - Short drive to Adelaide's CBD, Flinders University, Marion Shopping Centre, Mitcham Shopping Centre and Pasadena Green Shopping Centre. Specifications: CT / 5432/481 Council / Mitcham Zoning / HN Built / 1957 Land / 786m² Frontage / 22.38m Council Rates / \$1,415pa Emergency Services Levy / \$146.75pa SA Water / \$172.44pa Estimated rental assessment / \$560 - \$590 per week / Written rental assessment can be provided upon request Nearby Schools / Clapham P.S, Clovelly Park P.S, Bellevue Heights P.S, Eden Hills P.S, Unley H.S, Springbank Secondary College, Mitcham Girls H.S Disclaimer: All information provided has been obtained from sources we believe to be accurate, however, we cannot guarantee the information is accurate and we accept no liability for any errors or omissions (including but not limited to a property's land size, floor plans and size, building age and condition). Interested parties should make their own enquiries and obtain their own legal and financial advice. Should this property be scheduled for auction, the Vendor's Statement may be inspected at any Harris Real Estate office for 3 consecutive business days immediately preceding the auction and at the auction for 30 minutes before it starts. RLA | 226409