

23 Kamona Street, Clyde, Vic 3978



Sold House

Friday, 3 May 2024

23 Kamona Street, Clyde, Vic 3978

Bedrooms: 4

Bathrooms: 2

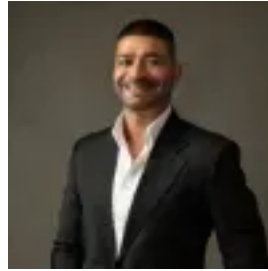
Parkings: 2

Area: 400 m2

Type: House



Gary Singh
0359913888



Sanjay Singh
0359913888

\$740,000

Belmond on the Clyde, Clyde North: With this remarkable new home, experience the height of modern living in Belmond on Clyde estate. This property, which exudes elegance, practicality, and ease of use, provides an unmatched quality of life in a lively and desirable neighbourhood. Enter to discover the pinnacle of contemporary luxury. This sophisticated home has four bedrooms, including an opulent master suite. With a lavishly appointed full ensuite and walk-in robes and vanities, the master bedroom is a haven. Built-in robes in other bedrooms offer plenty of storage and comfort for all users. An adaptable rumpus room and a practical family dining area make up the heart of the house, which is perfect for entertaining and relaxing. The focal point is the gorgeous kitchen, which is furnished with exquisite stone countertops and a large bench that provides more workspace. Cooking activities are made more enjoyable by the additional storage and convenience provided by the adjacent pantry. The kitchen's appeal is enhanced by gas cooking, a dishwasher and high-end appliances. Moving on, sliding doors open to a pleasant outdoor seating area surrounded by a low-maintenance garden, making this a place to enjoy and unwind all year round. Having carpets in the bedrooms adds to the overall feeling of cosiness and warmth in the house. Three linen cabinets and a designated laundry area highlight organisation and functionality in the home while fusing design and practicality.

Main Features of the Property:-Built by Eight Homes-4 Bedrooms-Master with Full Ensuite-Walk in Robe-Built in Robes-Family Dining Area-Open Plan Kitchen-Stone Benchtops-Top Quality Appliances-Alfresco Area-Low Maintenance Garden-Carpet in Bedrooms -Laundry-Linen Cupboards Heating: Yes Cooling: Yes Dishwasher: Yes Downlights: Yes- Chattels: All Fittings and Fixtures as Inspected as Permanent Nature-Deposit Terms: 10% of Purchase Price-Preferred Settlement: 30/45/60 Days This residence's prime location is a standout feature, positioned conveniently, close to all the amenities:-Shopping on Clyde Complex-Pasadena Fenced Dog Park-Eliston district Park playground-Medical Facilities-Daycares and Childcare Centers-Primary and Secondary Schools In essence, this young residential gem in Clyde's Pavilion estate by EIGHT HOMES epitomizes luxurious living in a dynamic community, offering an unmatched combination of comfort, style, and convenience for discerning homeowners. Properties like this sell in a blink of eye, Call GARY SINGH today and book a viewing. PHOTO ID REQUIRED AT OPEN HOMES. Every care has been taken to verify the accuracy of the details in this advertisement, however, we cannot guarantee its correctness. Prospective purchasers are requested to take such action as is necessary, to satisfy themselves of any pertinent matter.