

23 Park Drive, Clifton Hill, Vic 3068

Nelson Alexander

Sold House

Thursday, 14 September 2023

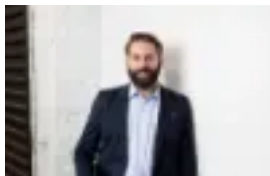
23 Park Drive, Clifton Hill, Vic 3068

Bedrooms: 3

Bathrooms: 2

Parkings: 2

Type: House



Roland Paterson
0417367997



Henry Rutherford
0468998001

\$2,590,000

Anticipate the unforeseen as you enter this remarkable, architect designed home, seamlessly blending enduring contemporary design, expansive space, and a meticulously crafted layout. Tucked away on the ground floor there are three double bedrooms, all with built in robes, the main a sumptuous retreat with large ensuite with separate spa bath, overlooking the private courtyard, plus central family bathroom, and landscaped courtyard with pedestrian access to acres of adjoining parklands. Designed to maximise space and light, the expansive first floor features an open-plan kitchen, dining and family living with large windows providing sensational views over the park plus a dedicated study area. The dream kitchen with an adjoining dining area features high-end appliances and fixtures, plus butlers' pantry and freestanding island bench with marble top, with an emphasis on functionality and quality. Entertain or relax and enjoy the leafy outlook from the entertainers' balcony with the bonus of an automated remote awning. Convenience has been a key consideration in the design, with features such as a remote double garage with internal access, separate laundry, guest WC, central heating and cooling, polished timber floors, and ample storage. Ideally located with the best of the inner north at your doorstep. Step outside to Merri Creek trails, Quarries Park, Clifton Hill Station, local cafes, Dights Falls, Yarra River/Capital City Trail, schools, Queens Parade, Smith Street, and sporting facilities.