

# 23 Princes Road, Schofields, NSW 2762

## Sold House

Friday, 19 January 2024



23 Princes Road, Schofields, NSW 2762

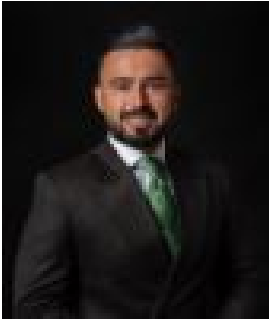
Bedrooms: 4

Bathrooms: 2

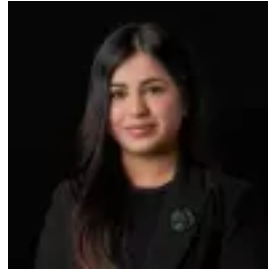
Parkings: 2

Area: 793 m2

Type: House



Amit Kumar  
0288964336



Siya Sachdeva  
0288964336

**\$1,360,000**

Situated on a tranquil street in Schofields and very well looked after by the current owners, this property is versatile for all your wants as a family, tradie/small business owner, or developer. As you enter the home through the French-style doors, you are immediately greeted with the spacious open-plan living/dining/kitchen which will become your hub for quality family time. This single-level steel framed home with wrap-around verandahs, a large backyard, and separate lock-up garage, creates plenty of space for play and entertainment. This environmentally friendly home boasts 10,000L water tanks, solar energy panels, and solar hot water, all of which will slash your energy and water bills. Within close proximity, you will find all the amenities you need - public transport, parks, schools, and shops. The kitchen is well presented featuring high-quality appliances, a 600mm oven, an eat-in breakfast bar, a walk-in pantry, and an abundance of storage space. Accommodation consists of four good-sized bedrooms with built-in wardrobes. The master bedroom is spacious with a walk-in wardrobe and a private ensuite bathroom. The home has rear access into the extra large backyard, the outdoor entertaining area is one of the best features of the home, with plenty of space for the kids to run around and play along with a swing set or for entertaining guests. Features you will love:- Steel frame home- Reverse cycle air-conditioning- High-quality hardwood flooring- Split system air conditioning and ceiling fan- Much loved and looked after by current owners- NBN connected- Automatic double garage with extra storage space - Newly updated with fresh paint- Developmental potential for more than one dwelling (S.T.C.A.) Location Highlights:- 8 minutes walk to Schofields Public School, Schofields Park & Louisa Bliss Park- 3 minutes drive and walking distance to Schofields Train Station and Schofields Shopping Village - Public bus stop within a 1 minute walk- 7 Minutes drive to Tallawong Metro Station- 10 minutes drive to Rouse Hill Town Centre- Short distance to local cafes and Medical Centres Disclaimer: All information contained herein is obtained from property owners or third-party sources which we believe are reliable. We have no reason to doubt its accuracy, however, we cannot guarantee it. All interested person/s should rely on their own enquiries.