

23 Saleham Street, Lathlain, WA 6100

THE AGENCY

House For Sale

Friday, 19 January 2024

23 Saleham Street, Lathlain, WA 6100

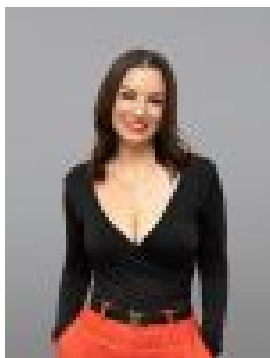
Bedrooms: 3

Bathrooms: 1

Parkings: 4

Area: 1012 m2

Type: House



Vanessa Naso
0419942106

Offers

You can't help but fall in love at first sight of this timeless 1950 character home. A harmonious blend of classic charm and modern convenience. Sitting on a huge 1012m² right in the heart of Lathlain. Homes like this in this location are rarely available. Being offered for the first time in 47 years, this is an unbelievable opportunity for families to create wonderful memories, or an investment opportunity with endless options of what you can do here. Boasting 3 bedrooms plus a study, 1 bathroom and ample parking space for 4 cars. A combination of original polished floorboards & tiling on the floors, Stunning lead light front windows, a gorgeous veranda to sit and wave at your wonderful neighbours you will gain here and beautiful original cornices. All the delights you would expect in a charmer like this. With added features including roller shutters, a split system air conditioner in the kitchen and huge bedrooms. You will be very happy and comfortable here. Outside, a sizable backyard beckons, promising delightful moments of relaxation and recreation. A huge double shed is waiting to be used for that project you've been wanting to finish, extra parking or maybe even a "man cave". Pick your own produce with the multiple trees growing ready to be enjoyed to the likes of Kalamata Olives, Loquats, Pomegranate, Pears, Grapes, Oranges & Figs. An opportunity presents to develop this property. Retain & build, live in or rent out while you make plans to develop. There are so many options. (subject to council approval) Nestled in the highly desired suburb Lathlain, enjoy a vibrant lifestyle as you stroll to popular cafes, parks, schools, and seamless public transport connections. Easy access to both the north and south enhances the home's convenience, while it's proximity to the city and Crown Entertainment complex places you at the heart of urban living. Council Rates : \$1500.87 P/A Water Rates : \$861.57 P/A Contact LOCAL SPECIALIST Vanessa Naso NOW on 0419 942 106 for more information including viewing times. This is a dream come true that you have been waiting for! Get ready to enjoy your new life in this sought after location. Disclaimer: This information is provided for general information purposes only and is based on information provided by the Seller and may be subject to change. No warranty or representation is made as to its accuracy and interested parties should place no reliance on it and should make their own independent enquiries.