

# 23 Sleeper Rise, Garfield, VIC, 3814

UNLOCK

## Sold Land

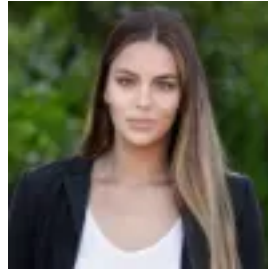
Friday, 12 May 2023

23 Sleeper Rise, Garfield, VIC, 3814

Type: Land



Rachael Woodham  
0356551531



Natascha Verkaik  
0356551531

## **Best Street in town!?**

Don't sleep on it or you will miss out!!

Prestige location in the newest street in town Sleeper Rise set just off Barker RD with the beautiful big custom builds in Oreti Crt and views out to the mountains

Backing on to farmland this property offers that real country lifestyle feel on a quarter acre 1001m2 approx. for you to build your dream home.

The location is perfect with the primary school, train station and the main street all within walking distance. Garfield being the home of the south easts best theme park Gumbuya World, Mount Cannibal walking tracks, main street filled with cute little cafe's, pub and new Thai restaurant

19.5m frontage 52m depth set at the top of the hill with a near level block with views to Baw Baw, great size block to get creative with your build and include landscaping and still offer plenty of room for a big shed for the caravan

Vacant land in Garfield is very hard to come by let alone a block of land that will have prestige new homes as neighbours.

Don't think too long and hard about this one as it wont last long!!

Lock in your builder! This new estate is titled and ready to build now :)