

**23 Springridge Boulevard, Wallan, Vic 3756**



**House For Sale**

Wednesday, 17 January 2024

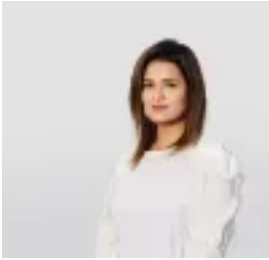
**23 Springridge Boulevard, Wallan, Vic 3756**

**Bedrooms: 4**

**Bathrooms: 2**

**Parkings: 2**

**Type: House**



Samaira Ahuja  
0384689900



Love Sharma  
0430534802

**\$810,000 - \$850,000**

Set in the picturesque SpringRidge estate and taking in breathtaking views across the valley and beyond, this neat low maintenance home on 752m<sup>2</sup> land is bound to appeal. Comprising four generous sized bedrooms, including a master suite with ensuite and walk in robe, the remaining bedrooms are spacious with built in robes and serviced by the functional central bathroom. The home offers spacious living with open plan kitchen, meals & family area, leading out to an entertainer's deck positioned perfectly to enjoy the stunning scenery. Catch up on new shows or repeat old favorites in the spacious theatre/ Rumpus room big enough for a family. The Home office is perfect for those working from home. Off the meals and living are extensive alfresco decks with spectacular panoramic valley views. The laundry & powder room conveniently located with access to side yard. Other features include :

- Ducted heating & cooling
- Plenty of storage
- Quality window furnishing & flooring
- Low maintenance backyard,
- Double remote garage with internal access,
- High ceilings and big windows ushering in an abundance of natural light.
- High Doors
- Theatre Room
- Home Office
- Appliances 900mm Induction cooktop and oven
- Built in microwave
- Dishwasher
- Spacious walk In pantry
- Spacious showers with niche
- Double Vanities
- Large kitchen Island with stone benchtops
- Built in Fireplace
- Downlights in main areas.
- Concrete around.
- Stunning Views in backyard
- Walk to local park and reserve.

The new owner will also enjoy the benefits of living within close proximity to Wallan Township, Wellington Square Shopping Centre, Wallan Station, Wallan Primary School and Secondary College, and around a 45-minute drive to Melbourne's CBD. For inspection contact Samaira on 0416 382 477.