

23 Swallow Crescent, Norlane, Vic 3214



House For Sale

Wednesday, 20 March 2024

23 Swallow Crescent, Norlane, Vic 3214

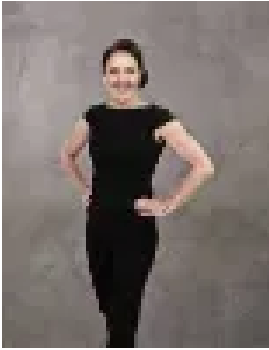
Bedrooms: 2

Bathrooms: 1

Parkings: 1

Area: 557 m2

Type: House



Michelle Winckle
0352411488



Matthew Roberts
0488616754

\$375,000 - \$405,000

Impeccably maintained, this fantastic blank canvas provides a fantastic opportunity for first-home buyers, tradies or investors looking for an entry-level property in the market. Situated on a spacious 557 sqm allotment, in a quiet locale, close to local shops, school and the ring road, this property presents an array of prospects for its next owner! Boasting ample natural light, gorgeous hardwood floors, and a spacious floorplan, the home comprises of 2 large bedrooms serviced by the main bathroom with a separate toilet. The heart of the home is the expansive kitchen complete with a gas oven and stove and plenty of bench and cupboard space. You'll enjoy all year-round comfort with an electric heater and ceiling fans. Other features of the home include:- Large garage with workshop- Undercover alfresco area for entertaining- Spacious separate laundry- Charming and neat façade Set in a highly enviable location, this property is within minutes from the Corio Shopping Centre, Barwon Health North Hospital, Waterworld Aquatic Centre, public transportation options, great local schools, North Shore train station, and the easily accessible Princes Highway. This location doesn't skip a beat and is sure to impress upon inspection! *All information about the property has been provided to Hayeswinckle by third parties. Hayeswinckle has not verified the information and does not warrant its accuracy or completeness. Parties should make and rely on their own enquiries in relation to this property.