

**232/28 Ferntree Place, Epping, NSW 2121**



**Apartment For Rent**

Thursday, 25 April 2024

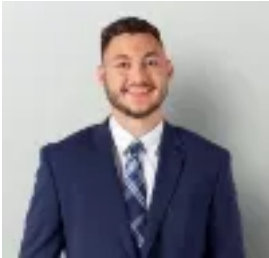
232/28 Ferntree Place, Epping, NSW 2121

**Bedrooms: 2**

**Bathrooms: 2**

**Parkings: 1**

**Type: Apartment**



Alex Nindra  
0290568600

**\$800 per week**

Discover the allure of this modern two-bedroom apartment nestled within a resort-style complex boasting an array of amenities, including a gym, tennis court, spa, sauna, and playground. Strategically positioned between Epping, Eastwood, and Carlingford, this residence offers unparalleled convenience, just a stone's throw away from Epping station, Eastwood village, Eastwood station, and Macquarie shopping centre. Features: -Expansive master bedroom with built-in robes, a sleek ensuite featuring a bath and split system air conditioning -Elegant high ceilings, chic neutral decor, and spacious proportions -Sun-drenched open-plan living and dining area flooded with natural light -Generously sized covered private balcony for al fresco relaxation -Well-appointed gas cooking kitchen equipped with European appliances -Premium floorboards lending a touch of sophistication throughout -Additional split system air conditioning for year-round comfort -Secure underground parking and intercom system for peace of mind -Complex amenities include a swimming pool, gym, sauna, barbecue area, and lush gardens -Within the catchment zone for Ngarala Public School and Cheltenham Girls High School