

238-240 Glenmore Road, Paddington, NSW 2021



House For Sale

Tuesday, 30 April 2024

238-240 Glenmore Road, Paddington, NSW 2021

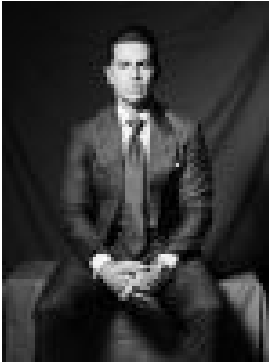
Bedrooms: 5

Bathrooms: 5

Parkings: 5

Area: 404 m2

Type: House



Maclay Longhurst
0283556783

Price on request

Discover the grandeur of 'Brompton,' a remarkable 16m wide double-fronted residence nestled in the heart of Paddington. This expansive home offers an unparalleled living experience, showcasing a seamless integration of two Victorian terraces dating back to c1880. Spanning a substantial 404 sqm block, 'Brompton' combines globally-sourced details with European-inspired luxury, setting a new benchmark for quality and sophistication. With its unique design and exceptional features, 'Brompton' stands as a testament to architectural excellence and offers a lifestyle of unparalleled comfort and elegance.* Flexi living areas, formal/informal spaces* Cocktail room, renovated sandstone cellar* Kitchen w/ pink marble benches, BORA stove* Roof terrace + courtyard, heated spa/pool* Full suite bedrooms, king master retreat* European oak floors, French wallpaper* Front forecourt parking + rear-lane access* Vibrant cafe & restaurant scene at door* Stroll to city buses or Edgecliff trains* Family-sized home, lifestyle & statement