

23A Parker Street, Curtin, ACT 2605



Sold House

Friday, 3 May 2024

23A Parker Street, Curtin, ACT 2605

Bedrooms: 3

Bathrooms: 2

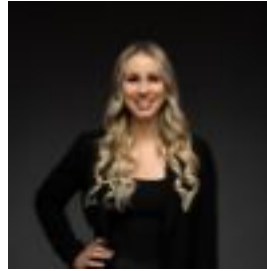
Parkings: 2

Area: 339 m2

Type: House



Tom Wiggins
0468771763



Jaimy Butler
0411957736

\$1,750,000

What you see: Designed as a luxurious low-maintenance residence. This home has been designed to capture natural light from the northerly aspect and extra high ceilings throughout. With views outside from the kitchen, you can watch the kids play in the private backyard or plunge pool while entertaining friends and family inside. This home offers a resort lifestyle with the benefits of a convenient location within walking distance of everything you need. What we see: Exactly what you think of, when you think of the best that Curtin has to offer. See more: Built by Master Builder Association award-winning Parliament Constructions. Gourmet kitchen featuring marble benchtops, white oyx splashback, custom joinery and ample storage. Appliances include Miele combi microwave steam oven, Miele oven, cooktop, Bosch integrated dishwasher and F & P integrated refrigerator. Master bedroom includes walk-in robe, makeup vanity and ensuite. Ensuite features freestanding bath, twin vanities and shower heads. Additional bedrooms includes built-in and or walk-in robes. Bathroom features floor-to-ceiling travertine tiles, wall-mounted vanity, integrated toilet and bath. Optional fourth bedroom/rumpus with built-in storage. Designer lighting in all bedrooms. Living area features custom entertainment joinery. Separate ground floor powder room. High ceilings and curved bronze-finished architectural windows throughout. Ash blonde timber flooring and wool carpet throughout. Performance double-glazed windows and sliding doors. Dual-zoned heating and cooling. Double garage with custom panel lift door, epoxy floor and internal access. Large entertainer's alfresco area features kitchen with bar fridge and Beefeater BBQ. Heated plunge pool with spa function. 4000 litre water tank. Landscaped and manicured yards. Private and central location within walking distance to shops, schools and parks. No body corporate fees. Within a 4 minute walk to Holy Trinity Primary School. Within a 5 minute walk to Curtin shops, restaurants and cafes. Within a 7 minute walk to Curtin Primary School. Within a 5 minute drive to Woden Town Centre. Within a 6 minute drive to Canberra Hospital. Within a 10 minute drive to Canberra CBD. Within a 10 minute drive to Mount Taylor Nature Reserve. Total house area: 229m². Living: 164m². Alfresco: 27m². Garage: 38m². Block: 339m². Built: 2023. EER: 6.0. Rates: \$4,562 p.a. Land tax: \$8,727 p.a. Rental appraisal: \$1,050 - \$1,150 p.w. Disclaimer: Please note the property will not be marked under offer and inspections will not cease until the exchange of contracts has taken place. The above figures are approximate only. The material and information contained within this marketing is for general information purposes only. HIVE Property does not accept responsibility and disclaim all liabilities regarding any errors or inaccuracies contained herein. You should not rely upon this material as a basis for making any formal decisions. We recommend all interested parties to make further enquiries.