

23A Withnell Crescent, St Helens Park, NSW 2560



House For Rent

Tuesday, 11 June 2024

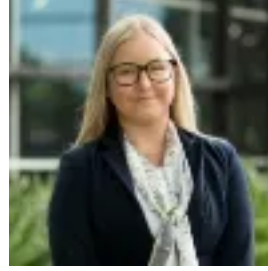
23A Withnell Crescent, St Helens Park, NSW 2560

Bedrooms: 2

Bathrooms: 1

Parkings: 2

Type: House



Jorja Newett
0424554805

Ray White Macarthur Group Leasing Team
0246298777

\$500 per week

The property boasts a corner location, providing ample natural light throughout the home. The bedrooms are cozy and comfortable, with a stylish bathroom for your convenience. The property is well-designed with quality flooring, furniture, and home décor. All of this is located on a quiet street in the popular suburb of St Helens Park and in close proximity to St Helens Park Public School this property will not last long.- Two spacious bedrooms with built in wardrobes and carpet to both bedrooms- Stainless steel appliances, stone bench tops and soft close drawers to kitchen- Split system air conditioning- Low maintenance, fully fenced yard with rear undercover pergola- Lawns and garden maintenance included.