

24/22-24 Wassell Street, Chifley, NSW 2036

Townhouse For Sale

Thursday, 18 January 2024

24/22-24 Wassell Street, Chifley, NSW 2036

Bedrooms: 3

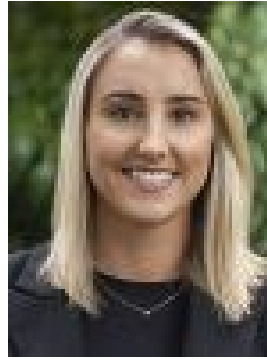
Bathrooms: 2

Parkings: 2

Type: Townhouse



Marnie Seinor
0425255200



Danielle Leemhuis
0402642718

Price On Request

A low maintenance entry level opportunity ideal for first homebuyers, couples or investors, this north facing townhouse offers impressive proportions both inside and out. It's set in a quiet cul-de-sac, a short stroll to buses and Chifley Public School.- Open living/dining zone adjoins bright sunroom/family area- Polished floors and white interiors enhance sense of space- Easy flow to sun drenched north facing entertainers' courtyard- Renovated granite kitchen equipped with stainless appliances - Three oversized bedrooms all appointed with built-in wardobes- Main complete with large private terrace and ensuite bathroom- Full bathroom on top floor plus additional w/c on entry level- Secure pet-friendly complex with swimming pool, sauna and spa- Single lock-up garage plus additional off street car space- Easy access to shops, the waterfront, parks and reserves