

24 Charlotte Street, Newport, Vic 3015



Sold House

Tuesday, 6 February 2024

24 Charlotte Street, Newport, Vic 3015

Bedrooms: 4

Bathrooms: 2

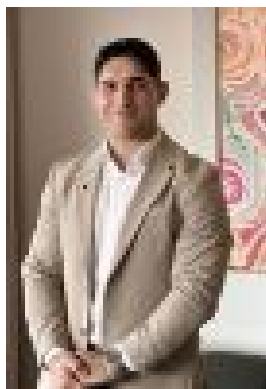
Parkings: 3

Area: 562 m2

Type: House



Joseph Luppino
0383987800



Max Marcialis
0422649411

\$1,475,000

Beautifully updated and extended to offer inviting family living in a fabulous lifestyle location, this classic four-bedroom, two-bathroom weatherboard displays the perfect blend of 1950s charm and modern sophistication. Spacious, light-filled living areas are enviably complemented by superb alfresco entertaining, with a covered deck offering a fully equipped outdoor kitchen and views of the spacious back garden. — a dream home for families seeking space, comfort, and lifestyle— indoor/outdoor open-plan kitchen/living/dining featuring a beautifully presented kitchen with butler's pantry and high-end appliances — formal living room with front garden views offering the luxury of a second living area— master bedroom with two built-in robes and sparkling ensuite— three additional bedrooms, two with a built-in robes — centrally positioned main bathroom with shower over bath — large walk-in laundry with adjoining guest powder room— comfort assured by app-controlled hydronic heating panels and split-system heating/cooling— stunning timber floorboards throughout bedrooms and living spaces— fabulous covered deck with an outdoor kitchen, beautifully appointed with Caesarstone benchtops, a sink, an in-built BBQ, and space for a wine fridge — dream family back garden with plenty of space for the kids to enjoy outdoor play + pretty manicured front garden— CCTV for peace of mind— off-street parking for five cars, including a secure double carport (3 cars undercover)— situated in a quiet street with a great community spirit, this is an ideal location to raise a family! Walk to Newport Lakes for a glorious natural escape, passing by two much-loved playgrounds on the way. The Circle shops await a six-minute stroll from home offering local conveniences, while the three-minute drive to Newport's vibrant village centre places cafes, eateries, boutiques, and grocers at your fingertips. Walk to Bayfit Leisure Centre and Newport Gardens Primary School and enjoy moments-from-home access to Altona Gate Shopping Centre and Millers Junction— only 12.5km from the CBD with easy road access and regular citybound trains from nearby Newport Station