

24 Everest Drive, Cheltenham, VIC, 3192

Sold Townhouse

Thursday, 13 April 2023

24 Everest Drive, Cheltenham, VIC, 3192

Bedrooms: 2

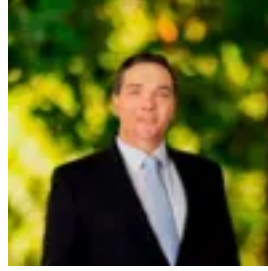
Bathrooms: 1

Parkings: 2

Type: Townhouse



Angelos Stefanis



Sven Fischer

Excellent potential – Parkland perfection

Situated in everyone's favourite, Pagewood Park Estate – this oversized 2-bedroom freestanding town home will leave nothing to be desired and is ready to become everything you want it to be. Just moments from Southland shopping, Train Station and Highett Reserve, all your lifestyle amenities are within easy reach. Add in a sensational allotment of approx. 300 m2 and this rare opportunity will appeal to astute home buyers and investors alike.

- North facing courtyard, remote double garage.
- Beautiful cathedral ceilings with oversized, sunlit lounge.
- Functional kitchen with good sized meals area.
- 2 double bedrooms, master with WIR, Rev Cycle Heat/Cool
- Central bathroom, powder room and separate laundry.
- Walk to Highett Reserve, Southland and Wickham Rd shops and eateries.
- Member access to Communal Pool, Tennis Courts etc