

24 Hinchin Street, Guildford, NSW 2161

Laing + Simmons

House For Sale

Friday, 19 April 2024

24 Hinchin Street, Guildford, NSW 2161

Bedrooms: 3

Bathrooms: 2

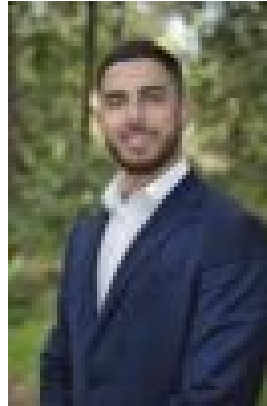
Parkings: 4

Area: 733 m²

Type: House



Ray Fayad
0296378111



Nabil Mouslemani
0296378111

Auction

Located in the desirable pocket of the Guildford area, this family home presents three bedrooms and a variety of appealing features. Well-kept and designed with family life in mind, it provides plenty of room, an outdoor entertainment area, and serene surroundings. Inside, you'll find three spacious bedrooms and inviting indoor and outdoor living areas, ideal for entertaining guests. Conveniently positioned near public transport, local amenities, and the bustling Guildford CBD, this property is definitely worth a closer look.-Three bedrooms-Large walk in & ensuite to master bedroom-Well-appointed kitchen boasting stone countertops-Main bathroom-Generously sized living area & dining area-Study, potential fourth bedroom-Sheltered alfresco, perfect for entertaining-Secure garage-733m² blockLocation:-750m to Excelsior Shops & Cafes-1.2m to Guildford Road Shops & Cafes-1.5km to Guildford Station-3.3km to Merrylands Station School catchment & Day-care:-Blaxcell Street Public School-Granville South Creative & Performing Arts-St Patricks Primary Guildford-Garderie Early Learning Centre