

**24 Meander Court, Ormeau Hills, QLD, 4208**



**Sold House**

Friday, 12 May 2023

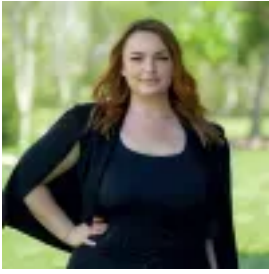
24 Meander Court, Ormeau Hills, QLD, 4208

**Bedrooms: 5**

**Bathrooms: 2**

**Parkings: 2**

**Type: House**



Savannah Davis

## Stunning & Modern Family Home In A Quiet Cul-De-Sac

An amazing opportunity has become available to own this stunning family home situated on a large 869m<sup>2</sup> block offering the ultimate family-friendly lifestyle. Located in the gorgeous Ormeau Hills this modern home built in 2016 awaits its new family. This residence includes all the features and fittings you would want indoors and outdoors while being located in a quiet cul-de-sac across from a Reserve.

The kitchen is centrally located to make entertaining for friends and family easy and enjoyable, offering loads of cupboard space and a butler's pantry, plus the latest appliances and stone bench tops.

The open-plan family and dining adjoins the kitchen with easy access to the entertainment areas as well as a separate media room and other multiple living areas that will ensure the whole family have a room to enjoy.

The Master suite features an oversized en-suite boasting a dual vanity, extra large shower and a spacious his and hers robe. The covered alfresco area overlooks the beautiful block and offers peace and quiet in a family friendly community.

Located only 2 minutes off the M1 motorway and right in the middle of the corridor between Brisbane and the Gold Coast. This beautifully presented, contemporary home will not disappoint.

### Features:

- Modern & spacious kitchen with stainless steel appliances including a dish washer
- Free standing 900mm oven with a natural gas cook top
- Over sized butler's pantry
- Open living and dining spaces
- Separate carpeted media room
- Carpeted Rumpus room
- Master bedroom with an oversized walk in robe, a private ensuite with his and her basins & separate toilet
- Bedrooms 2, 3, 4 & 5/study with built in robes
- Separate fitted laundry with external access outside
- Powder room
- Ducted - 6 zone air conditioning
- Fans to living spaces and bedrooms
- Large undercover alfresco with ceiling fan
- Fully fenced back yard
- Quality chandeliers & light fittings throughout
- Polished porcelain tiles

### Additional features:

- Kitchen has soft close doors
- Security screens throughout
- Smart swan security system - 8 camera's
- Swan security alarm
- Swan door bell
- Solar - 6.5kw system with 24 Panel
- Additional drainage was added to the backyard so that kids can play all year round

Ormeau Hills was designed for a lifestyle of convenience and community, positioned minutes from your local school, walking tracks and parks, train station, child care, major shopping centres, the best doctors and easy access to M1 providing a short commute to either Brisbane or Gold Coast.

All inspections will be conducted adhering to COVID-19 Social Distancing Guidelines and Ray White's no-contact policy.

Important: Whilst every care is taken in the preparation of the information contained in this marketing, Ray White Upper Coomera will not be held liable for the errors in typing or information. All information is considered correct at the time of printing