

# 24 Oliveri Place, Schofields, NSW 2762

## House For Sale

Thursday, 8 February 2024

**AMIT KUMAR**  
PROPERTY | POWERED BY SMILE ELITE

24 Oliveri Place, Schofields, NSW 2762

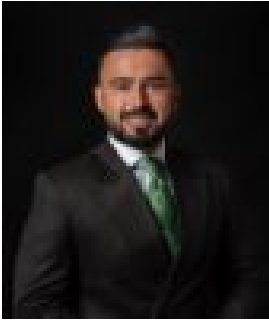
**Bedrooms: 3**

**Bathrooms: 2**

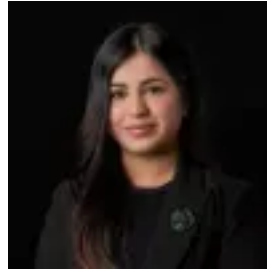
**Parkings: 2**

**Area: 450 m2**

**Type: House**



Amit Kumar  
0288964336



Siya Sachdeva  
0288964336

## Price Guide \$950,000

Situated in a quiet cul-de-sac location, in one of the most highly desired pockets of Schofields, this home situated on an ideal 449 sqm block of land offers the perfect fusion of convenience and comfort for you and the family to enjoy. Within short proximity, you will find Schofields Train Station and the Schofields Shopping Village, as well as within the premium Galungara Public School Catchment. Boasting the perfect blend of indoor and outdoor living and entertaining areas throughout, with the living area upon entry flowing onto the open plan kitchen and dining area that runs straight into the outdoor undercover alfresco and spacious backyard, perfect for those who love to entertain and spend quality time with their loved ones. The kitchen is well appointed featuring quality stainless steel appliances, tiled splashbacks, LED lights, burner gas cooktop, 600mm oven, an eat-in breakfast bar as well as plenty of storage space. Accommodation consists of three good-sized bedrooms, two of which with built-in robes. The master bedroom features a walk-in wardrobe, ceiling fan as well as a private ensuite. Features you will love:- LED lights throughout the home- Split system air conditioning in the living areas and ceiling fans in bedrooms- Freshly painted walls throughout - New carpet in all the bedrooms- Tiled flooring through the common area - Spacious backyard for the kids to play- Double lock up garage Location highlights:- Short distance to the premium Galungara Public School and St. Joseph's Primary School- 4 minutes drive to Schofields Train Station and Schofields Shopping Village- 7 minutes drive to Tallawong Metro Station- 10 minutes drive to Rouse Hill Town Centre- Short walk to childcare on Alex Avenue- Short walk to Alex Avenue Medical Centre- Multiple parks nearby Disclaimer: All information contained herein is obtained from property owners or third-party sources which we believe are reliable. We have no reason to doubt its accuracy, however, we cannot guarantee it. All interested person/s should rely on their enquiries.