

24 Portland Place, Waterways, Vic 3195



Sold House

Friday, 1 March 2024

24 Portland Place, Waterways, Vic 3195

Bedrooms: 4

Bathrooms: 2

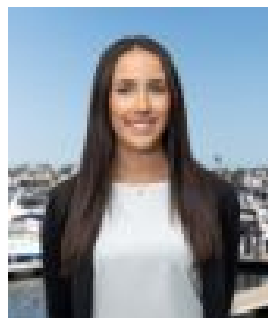
Parkings: 2

Area: 809 m2

Type: House



Genevieve Hill
0397721088



Emily Hill
0491743110

\$1,810,000

In the quietest corner of Portland place, one of Waterways' most coveted addresses, this substantial residence is one of a few properties to boasts a privileged position right on the water's edge. Situated on an 809sqm block, with lake views every which way you turn, the accommodation is fresh and filled with natural light, boasting crisp new paint and plush carpets along with new blinds and LED Lighting. Tucked down a long drive, the floorplan is introduced by an impressive entrance off which is the first of multiple living areas which opens to a lakeside deck. Further on is a family and dining area alongside the large kitchen with stone benchtops, stainless steel appliances and a walk-in pantry, while right at the rear with access to yet another deck is more space to relax or entertain. Families will love an adaptable living area upstairs which can become an ideal teen retreat or homework zone, also up here are the four bedrooms including a palatial master with open hotel-style ensuite, massive walk-in robe and tranquil water-view balcony. The remaining bedrooms (one also with balcony) all offer fitted robes and share a family bathroom with separate WC while a ground floor powder room, laundry with garden access and ample storage are all offered. Wrapped in plenty of gardens and with ducted heating/cooling and a double auto garage, the home is within way reach of Aspendale Gardens shops, primary school and amenities, close to the lakeside café & bus stops and within moments of Haileybury and Lighthouse colleges and the freeway.