

24 Tamborine Street, South Ripley, Qld 4306



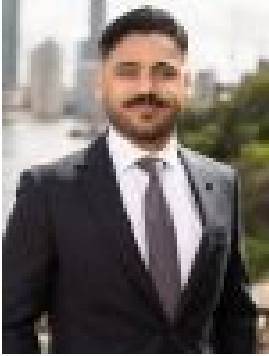
Residential Land For Sale

Sunday, 26 May 2024

24 Tamborine Street, South Ripley, Qld 4306

Area: 496 m2

Type: Residential Land



Umair Khan
0400444786

Contact Agent

Discover an exceptional opportunity at 24 Tamborine Street, South Ripley-an enviable location within the renowned Providence estate. This 496m² block (15.5m width x 32m depth) of registered land offers the perfect canvas to realize your dream home in a thriving community. This lot was registered a few years ago. The neighborhood already boasts beautiful homes and is one of the early stages of the Providence Estate, making it a very established area. Providence estate, eight years into its 20-year plan, promises growth and vitality with modern amenities, green spaces, and a vibrant community. With breathtaking views of the South Ripley Valley, this is the last premium block available on the street. No other lot in the vicinity offers such stunning views. We recommend driving past to witness the unparalleled potential this block presents.

Features:

- Large 496m² allotment
- Elevated position with sweeping views
- Services already connected
- Walk to local schools and parks
- Approximately 15.5m frontage x 32m length

Nearby Amenities:

- Ripley Valley State School
- Ripley Valley State Secondary College
- Ripley Central State School
- Ripley Town Centre
- Yamanto Central Shopping Centre
- Sporting grounds and parks

Convenient Proximity to:

- Ipswich CBD (15 minutes)
- Brisbane CBD (40 minutes)
- RAAF Base Amberley (15 minutes)
- Springfield Central (15 minutes)
- Ripley Valley State School & Secondary College (5 minutes)
- Bremer State High School (10 minutes)

Your vision for a dream home awaits realization. Picture yourself in a perfect sanctuary tailored to your desires. Your new home will be located in the visionary Providence Community in the heart of South Ripley, conveniently just off the Centenary Highway. As one of the largest growth areas in South East Queensland, Providence offers a fantastic mix of community spirit and at-your-doorstep convenience, making it the ideal place to raise your growing family.

- 5-minute walk to Ripley Valley State School
- 5-minute walk to Ripley Valley State Secondary College
- 9-minute walk to the local cafe and Splash'n'Play children's park
- 4-minute drive to Ripley Town Centre and Medical Precinct
- 7-minute drive to Orion Springfield Town Centre
- 10 minutes to Springfield Central Train Station
- 15 minutes to Ipswich
- 40km to the heart of Brisbane CBD

(All times and distances are approximate) Your dream home starts here!